

Mood, anxiety and psychotic phenomena measure a common psychopathological factor

J. Stochl^{1,2}, G. M. Khandaker^{1,2}, G. Lewis³, J. Perez^{1,2}, I. M. Goodyer¹, S. Zammit^{4,5}, S. Sullivan⁵, T. J. Croudace⁶ and P. B. Jones^{1,2*}

¹Department of Psychiatry, University of Cambridge, NIHR Biomedical Research Centre and CLAHRC East of England, Cambridge, UK

²Cameo Early Intervention Services, Cambridgeshire and Peterborough NHS Foundation Trust, Cambridge, UK

³Mental Health Sciences Unit, University College London, London, UK

⁴Institute of Psychological Medicine and Clinical Neurosciences, Cardiff University School of Medicine, Cardiff, UK

⁵Centre for Academic Mental Health, School of Social and Community Medicine, University of Bristol, Bristol, UK

⁶Mental Health and Addiction Research Group (MHARG), Hull York Medical School (HYMS) and Department of Health Sciences, Seebohm Rowntree Building, University of York, York, UK

Background. Psychotic phenomena are common in the general population but are excluded from diagnostic criteria for mild to moderate depression and anxiety despite their co-occurrence and shared risk factors. We used item response theory modelling to examine whether the co-occurrence of depressive, anxiety and psychotic phenomena is best explained by: (1) a single underlying factor; (2) two separate, uncorrelated factors; (3) two separate yet linked factors; or (4) two separate domains along with an underlying 'common mental distress' (CMD) factor. We defined where, along any latent continuum, the psychopathological items contributed most information.

Method. We performed a secondary analysis of cross-sectional, item-level information from measures of depression, anxiety and psychotic experiences in 6617 participants aged 13 years from the Avon Longitudinal Study of Parents and Children (ALSPAC) birth cohort and 977 participants aged 18 years from the ROOTS schools-based sample. We replicated results from one sample in the other and validated the latent factors against an earlier parental measure of mental state.

Results. In both cohorts depression, anxiety and psychotic items were best represented as a bi-factor model with a single, unitary CMD factor on which psychotic items conveyed information about the more severe end (model 4); residual variation remained for psychotic items. The CMD factor was significantly associated with the prior parental measure.

Conclusions. Psychotic phenomena co-occur with depression and anxiety in teenagers and may be a marker of severity in a single, unitary dimension of CMD. Psychotic phenomena should be routinely included in epidemiological assessments of psychiatric morbidity, otherwise the most severe symptomatology remains unmeasured.

Received 24 February 2014; Revised 29 September 2014; Accepted 7 October 2014

Key words: Depression, epidemiology, nosology, psychometrics, psychosis.

Introduction

Psychotic and mood phenomena may co-occur in severe psychiatric disorders but neither diagnostic classifications, such as the Diagnostic and Statistical Manual of Mental Disorders, 5th edition (DSM-5) and International Classification of Diseases (ICD)-10, nor empirical studies acknowledge the presence of psychotic experiences in more common, mild to moderate depression or anxiety disorders (World Health Organization, 1992; Krueger, 1999; American Psychiatric Association, 2013). However, all these categories have overlapping aetiology, including genetic

and environmental factors, and share pathophysiological mechanisms (Goldberg *et al.* 1987; Nishida *et al.* 2008; Lichtenstein *et al.* 2009; van Os *et al.* 2009; Varghese *et al.* 2011; Kelleher *et al.* 2012a, b). Psychotic phenomena are also relatively common, especially in young people (van Os *et al.* 2009; Kelleher *et al.* 2012a), alongside depression and anxiety (Nishida *et al.* 2008; Varghese *et al.* 2011; Kelleher *et al.* 2012b). Often considered as harbingers of schizophrenia and related disorders (Poulton *et al.* 2000), psychotic phenomena are also markers of suicidal thoughts and non-suicidal self-injury (Nishida *et al.* 2008; Kelleher *et al.* 2012b; Murray & Jones, 2012). Thus, conceptual, clinical and causal links exist between psychotic and mild to moderate mood disorders despite their inclusion as distinct entities in diagnostic classifications.

We report a study of the relationship between depressive, anxiety and psychotic experiences in two

* Address for correspondence: P. B. Jones, Department of Psychiatry, University of Cambridge, Cambridge Biomedical Campus, Box 189, Cambridge CB2 0QQ, UK.
(Email: pbj21@cam.ac.uk)

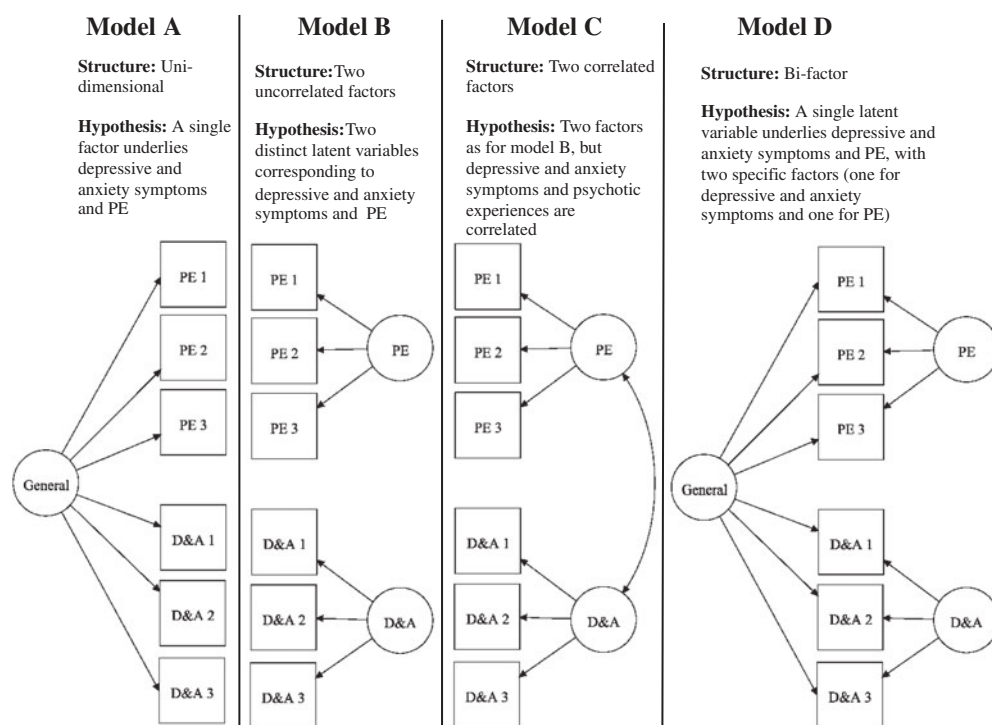


Fig. 1. Conceptual models of the alternative relationships between psychotic experiences (PE), and depressive and anxiety (D&A) symptoms.

British general population cohorts, replicating the results from one independently in the other. We used item response theory (IRT; Van der Linden & Hambleton, 1997) to model the relationships between psychotic, depressive and anxiety phenomena at the individual item level rather than diagnosis. Fig. 1 shows our four competing hypotheses: (A) a single common underlying factor; (B) two separate factors that are uncorrelated; (C) two separate factors linked to each other; (D) two separate factors along with a primary contribution from a shared underlying 'common' factor measured by psychotic, depressive and anxiety items. We interpreted these models in terms of latent dimensions determining variation in psychopathology.

Method

Description of samples

The Avon Longitudinal Study of Parents and Children (ALSPAC) is based on the offspring of all pregnant women resident in the county of Avon, England, with expected dates of delivery between April 1991 and December 1992 (Boyd et al. 2013; Fraser et al. 2013). The ALSPAC cohort consisted of 14 062 live births. We used information from 6617 individuals [3238 (48.9%) males, 3379 (51.1%) females] who provided

data on psychotic, depressive and anxiety phenomena during a research interview at age 13 years.

The ROOTS cohort (Goodyer et al. 2010) is a school-based sample of young people recruited from secondary schools throughout the county of Cambridgeshire, England, including affluent and lower socio-economic groups, from urban, suburban and rural communities. Sampling was in two stages, initially of schools where 18 of 27 schools (two private) agreed for their year 9 classes to take part. The second stage comprised random invitation to parents and students resulting in a sample of 1238 (54.5% girls) 14-year-olds giving personal and parental consent to take part of which 1185 (95.5%) progressed to the full baseline assessment. Following the baseline interview at age 14 years and a follow-up questionnaire at age 15–16 years, the data here were collected at age 17 years when 1074 individuals [473 (44.0%) boys, 601 (56.0%) girls] were interviewed of whom 977 (91%) had complete data for the present analysis.

Measures

Depressive and anxiety symptoms

The self-reported Mood and Feelings Questionnaire (MFQ) was administered in both the ALSPAC [which used the shortened 13-item version or Short Mood and Feelings Questionnaire (SMFQ); Sharp et al. 2006]

and ROOTS (full 33-item version) (Angold *et al.* 1995) cohorts. The MFQ measures core symptoms of depression and anxiety experienced over the past 2 weeks and is typically used for screening, although also offers a summary measure of severity. From ROOTS we analysed only the 13 items that comprise the SMFQ version used in ALSPAC; each item is scored on a three-point scale: 'not true' = 0; 'sometimes true' = 1; and 'true' = 2.

In both cohorts behavioural and emotional problems were measured prior to the main outcome measures [MFQ and Psychosis-like Symptoms Interview (PLikSi)] using the parental version of the Strengths and Difficulties Questionnaire (SDQ; Goodman, 1997) that gives a total difficulties score of 0–40. This was administered at age 10 years in ALSPAC and age 15.5 years in ROOTS.

Psychotic experiences

Psychotic experiences were assessed by items comprising the semi-structured PLikSi in both ALSPAC and ROOTS. The PLikSi comprised 12 'core' questions derived from the Diagnostic Interview Schedule for Children-IV (DISC-IV; Shaffer *et al.* 2000), and the Schedules for Clinical Assessment in Neuropsychiatry version 2.0 (SCAN 2.0; World Health Organization, 1994). Psychotic experiences were elicited in three domains: hallucinations, delusions and experiences of thought interference. This allowed an observer rating for the presence of any psychotic experiences (suspected or definite) in the past 6 months (scoring: 'no psychotic experiences' = 0, 'suspected psychotic experiences' = 1, 'definite psychotic experiences' = 2).

Several measures were taken in order to ensure the quality of PLikSi interviews. In ALSPAC, the interviews were carried out by 13 psychology graduates who were trained by two experienced clinicians and SCAN trainers [a child psychiatrist and a general adult psychiatrist; Horwood *et al.* (2008)]. The interviewers were required to reach 95% agreement whilst scoring two 'gold standard' interview videotapes prepared by the trainers. Monthly booster training sessions and workshops were arranged to discuss scoring of complex cases and consolidate training. All interviews were audiotaped for each interviewer until they reached eight interviews containing several items rated 'positive' (i.e. psychotic experiences present). These tapes were independently rated by a second interviewer. The average inter-rater reliability for PLikSi interviews was good ($\kappa=0.7$) (Horwood *et al.* 2008). A similar process was followed for the ROOTS cohort. Contact was maintained between the cohorts by one of us (P.B.J.) to discuss the process during the course of data collection and all ROOTS PLikSi

decisions were decided through consensus between the interviewers and him.

Statistical analysis

Co-variation between depressive and anxiety symptoms, measured by the SMFQ, and PLikSi in each sample was initially assessed by plotting spinograms indicating the proportion of subjects at each score of the former who also reported psychotic experiences. A development of the histogram, the width of a spinogram bar is proportional to the frequency of respondents. The psychometric relationships between all items included in the PLikSi and SMFQ were then investigated using a latent variable modelling framework (Loehlin, 1992). This partials-out the influence of error associated with measuring items, allows direct comparison of alternative models in terms of goodness of fit to the data, and provides simultaneous information on the distribution of items and respondents on a latent continuum.

In addition, the latent variable modelling framework addresses two methodological issues arising from the distributional properties of the data and from the survey design. First, traditional latent variable modelling relies on the assumption of a multivariate normal distribution for the definition and measurement of the latent variables. This may hold for neither psychotic experiences nor depressive and anxiety symptoms in the general population. Therefore, we used a semi-parametric modelling approach (Masyn *et al.* 2010). This approach combines finite mixture modelling and an IRT variant of factor analysis where measurement invariance constraints are imposed between the latent classes. Initial analyses of the data using this method revealed that two classes were sufficient to model the distribution of latent scores.

Second, since the data collection for PLikSi items was based on a semi-structured interview, within-interviewer clustering of responses may have influenced response variation strongly enough to affect model parameters in the factor analysis. We addressed this by using a modelling approach that corrects the standard errors of the factor model parameters for this aspect of survey design. Items in our measures were ordinal (i.e. no psychotic experiences, suspected psychotic experiences, definite psychotic experiences), so our approach can be described as semi-parametric, multi-dimensional item response modelling with standard errors adjusted for clustering of data at the interviewer level.

Four models of the possible relationship between depressive and anxiety symptoms and psychotic experiences (Fig. 1) were estimated and compared using multiple information criteria indices. We report the

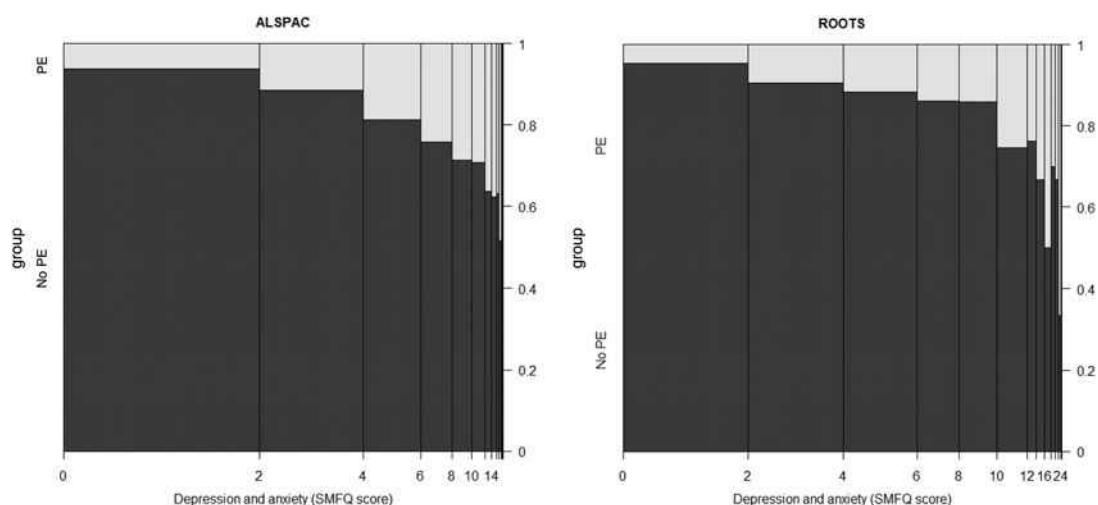


Fig. 2. Proportions of individuals with psychotic experiences (PE; measured by the Psychosis-like Symptoms Interview) as a function of depressive and anxiety scores (Short Mood and Feelings Questionnaire; SMFQ). The width of the bars is proportional to the number of participants with corresponding SMFQ score. ALSPAC, Avon Longitudinal Study of Parents and Children.

Akaike information criterion (AIC; Akaike, 1974), Bayesian information criterion (BIC; Schwarz, 1978) and a BIC adjusted for sample size (SABIC; Sclove, 1987). Robust full information maximum likelihood was used in all model estimations.

Information functions for the two domains of items (depressive and anxiety compared with psychotic experiences) provide a graphical representation of the precision of measurement (information function; y -axis) at each location along the population latent distribution (x -axis). The position on the x -axis corresponding to the maximum information functions indicates the locations on this latent distribution where items provide best discrimination between survey respondents in terms of that continuum. Thus, the information function for any item is an index of the measurement efficiency of that item, conditional on its location on the latent continuum (Nicewander, 1993).

Last, we carried out *post-hoc* analyses in both cohorts to examine the validity of the derived latent distribution of the common factor measured by the depressive, anxiety and psychotic experiences. We plotted factor scores against the total SDQ sum scores and fitted a linear regression model.

The PLikSi item ‘delusions of persecution’ was found to be highly correlated (≈ 0.99 or ≈ -0.99) with many other psychotic experiences, causing estimation problems due to collinearity. Thus, this item was excluded from analyses. Further, in the ROOTS data, collinearity (correlation over 0.99 or below -0.99) was also observed between five items (‘delusions of control’, ‘delusions not otherwise specified’, ‘thought broadcasting’, ‘thought insertion’ and ‘thought

withdrawal’) and the remaining psychotic experience items (see correlations in online Supplementary Fig. S1). Therefore, data from ROOTS were analysed without these five items, i.e. for items collinear with each other only one was included in analysis. Consequently, only six psychotic experiences items were analysed in the ROOTS dataset.

Results

Spinograms (Fig. 2) show the proportion of people with psychotic experiences with respect to total depressive and anxiety symptom scores (SMFQ). Lower SMFQ sum-scores are more frequent in the population so are represented by wider bars than higher scores. The proportion of people in each category also reporting one or more psychotic experiences increased with higher scores for depressive and anxiety symptoms. This co-variation between the occurrence of psychotic experiences, and depressive and anxiety symptoms throughout their distributions justified further modelling of the association.

Model comparison

Table 1 shows the AIC, BIC and SABIC values for models A–D in the two cohorts. For all of these fit indices, the model with lowest value is preferred in terms of model fit to the data; strong indication of one model being preferred over the other is taken when the differences are greater than 10 (Kass & Raftery, 1995).

The bi-factor model (model D) was preferred in ALSPAC over models A–C. Three out of four fit

Table 1. Comparison of model fit

Study	Model	AIC	BIC	SABIC
ALSPAC	A	103 869	104 372	104 137
	B	103 040	103 563	103 319
	C	103 026	103 556	103 308
	D	102 710 ^a	103 390 ^a	103 072 ^a
ROOTS	A	17 449	17 728	17 550
	B	17 395	17 689 ^a	17 501
	C	17 396	17 695	17 504
	D	17 306 ^a	17 690	17 445 ^a

AIC, Akaike information criterion; BIC, Bayesian information criterion; SABIC, BIC adjusted for sample size; ALSPAC, Avon Longitudinal Study of Parents and Children.

^a Best-fitting models.

indices indicated the same preference for the bi-factor model in the ROOTS sample; the BIC alone showed a slight preference for model B (i.e. two uncorrelated factors).

These results suggested the existence of a unitary or common underlying factor (hereafter referred to as common mental distress; CMD) in addition to the two specific factors corresponding to the residual information in (a) psychotic experiences and (b) depressive and anxiety symptoms in both cohorts. Standardized estimates for the bi-factor models are provided in Table 2.

Comparison of loadings on specific and common factors in both cohorts showed that SMFQ items loaded more on the common than the specific factor, suggesting that the CMD has a great deal of overlap with depression and anxiety. PLikSi items tended to load similarly on both common and its specific factor in ALSPAC, but higher on the common factor in ROOTS.

Range of the latent CMD continuum measured by the SMFQ anxiety and depression items compared with PLikSi items

In both cohorts, psychotic experiences were located at the more severe end of the latent continuum of CMD. This can be ascertained by the height and location of the curves displayed on the graphs in Fig. 3. In this figure we have used our model to add up the psychometric contribution that the items from each instrument make to the measurement of the common dimension from the bi-factor model. Psychotic experiences were located further to the more severe end of the CMD dimension on the x -axis while the SMFQ items covered the less severe range.

Individual information functions are derived from location of item thresholds and size of factor loading (discrimination power in IRT terms). In both cohorts, the rarer, less frequent items from the PLikSi extend the CMD dimension further towards the right, more severe end.

Post-hoc validation

Parental SDQ scores at age 10 years in the ALSPAC cohort showed a linear relationship with CMD scores at age 13 years ($\beta=0.17$, $p<0.001$). This association was virtually identical in the ROOTS cohort where the SDQ was measured at age 15.5 years ($\beta=0.18$, $p<0.001$; see online Supplementary Fig. S2).

Discussion

This study indicated that psychotic phenomena, and depressive and anxiety symptoms are manifestations of a unitary, latent continuum of CMD, with psychotic experiences conveying information about the more severe end. These findings have implications for current psychiatric nosology, arguing against the concept of co-morbidity of different diagnostic entities when it occurs together with depression and anxiety in the general population. Our conclusions cannot be generalized to clinical situations where further research should test a similar model.

Without explicitly acknowledging that psychotic experiences may measure the same psychopathological concept as depression and anxiety, the co-occurrence of these symptoms is increasingly recognized in a number of important recent studies (Verdoux *et al.* 1999; Hanssen *et al.* 2003; Nishida *et al.* 2008; Polanczyk *et al.* 2010; van Rossum *et al.* 2011; Kelleher *et al.* 2012b; Sullivan *et al.* 2014). These suggest that the presence of psychotic experiences in childhood or adolescence may be a marker of multiple concurrent depressive or anxiety disorders (i.e. severity of mental ill-health) or of the likelihood of more clinically concerning behaviours, such as suicidal thoughts or self-harm (Nishida *et al.* 2008; van Rossum *et al.* 2011; Kelleher *et al.* 2012b; Murray & Jones, 2012; Wigman *et al.* 2012, 2014). Longitudinal data indicate that psychotic experiences at age 20 years are later associated with a range of non-psychotic mental disorders (Rossler *et al.* 2011). One study, conceptually similar to our own, applied psychometric methodology to a range of psychopathology measures in the Dunedin birth cohort (Caspi *et al.* 2014); a single, general psychopathology dimension emerged but the concept of differential item contribution to severity was not explored (Spearman, 1904). Our study extends this approach by investigating the location of individual

Table 2. Standardized factor loadings for the bi-factor model in the ALSPAC and ROOTS cohorts

Scale	Item	ALSPAC			ROOTS			
		Common	Depression and anxiety	Psychotic experiences	Common	Depression and anxiety	Psychotic experiences	
Depression and anxiety (SMFQ)	Miserable or unhappy	0.47	0.42		0.27 ^a	0.81		
	Didn't enjoy anything at all	0.40	0.27		0.44	0.50		
	Felt so tired, just sat around and did nothing	0.49	0.06 ^a		0.46	0.25		
	Restless	0.45	0.08		0.50	0.19		
	Felt was no good any more	0.57	0.65		0.59	0.60		
	Cried a lot	0.46	0.55		0.27	0.57		
	Hard to think properly or concentrate	0.57	0.22		0.65	0.34		
	Hated self	0.59	0.65		0.62	0.58		
	Thought they were a bad person	0.47	0.32		0.64	0.37		
	Felt lonely	0.52	0.55		0.54	0.51		
	Nobody really loved them	0.51	0.69		0.60	0.53		
	They could never be as good as other kids	0.50	0.58		0.71	0.33		
	Did everything wrong	0.53	0.51		0.77	0.36		
	Psychotic experiences (PLikSi)	Auditory hallucinations	0.54		0.47	0.70		0.37
		Visual hallucinations	0.53		0.49	0.06 ^a		0.99
Delusions of being spied on		0.53		0.53	0.81		0.13	
Delusions of persecution		^b		^b	^b		^b	
Delusions of thoughts being read		0.53		0.50	0.81		0.25 ^a	
Delusions of reference		0.47		0.59	0.73		0.13 ^a	
Delusions of control		0.49		0.70	^b		^b	
Delusions of grandiose ability		0.43		0.58	0.70		0.40 ^a	
Delusions NOS		0.49		0.55	^b		^b	
Thought broadcasting		0.36		0.59	^b		^b	
Thought insertion		0.53		0.50	^b		^b	
Thought withdrawal	0.49		0.69	^b		^b		

ALSPAC, Avon Longitudinal Study of Parents and Children; SMFQ, Short Mood and Feelings Questionnaire; PLikSi, Psychosis-like Symptoms Interview; NOS, not otherwise specified.

^a Non-significant ($\alpha=0.05$) factor loadings.

^b Items excluded from analysis due to collinearity.

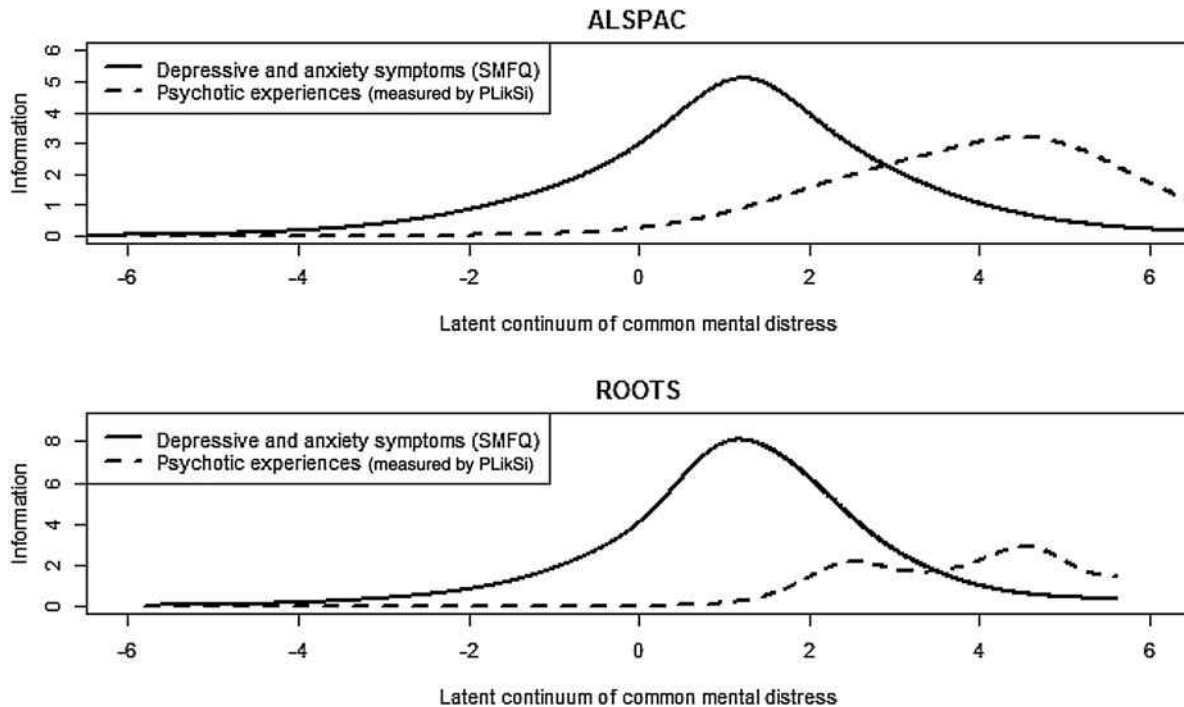


Fig. 3. Location of the items measuring psychotic experiences relative to depressive and anxiety symptoms on the latent continuum of common mental distress. ALSPAC, Avon Longitudinal Study of Parents and Children; SMFQ, Short Mood and Feelings Questionnaire; PLikSi, Psychosis-like Symptoms Interview.

items on the latent continuum of the common factor, replicating the findings in independent samples, and by validating the CMD factor against the overall SDQ score, a well-established psychological measure.

Taken together, these findings suggest that a fresh approach to psychiatric nosology is required because distinct, categorical systems are just not supported by modern modelling techniques. This echoes earlier work based on hierarchical approaches to the classification of symptoms (Sturt, 1981) and diagnosis (Foulds & Bedford, 1975). Sturt (1981) showed that rarer psychopathological items usually occur only in the presence of many common items, while the extension to diagnosis, a more specific formulation of the same idea, was not adopted by major classifications in development such as DSM-III (American Psychiatric Association, 1980) and its successors. The models examined here are, themselves, natural extensions of these views, lending support to a more dimensional approach to classification that negates the increasing trend towards defining multiple co-morbid diagnoses in individuals. This may better reflect clinical reality and common aetiological and pathophysiological factors. Thus, the concept of common mental disorder including depression and anxiety requires redefinition if psychotic phenomena are part of it. We suggest that psychotic phenomena should be considered as being compatible with mild to moderate

depression, perhaps with a psychosis criterion akin to that which reflects prominent anxiety symptoms in DSM-5 major depression or manic features in unipolar depression; this would add fidelity and measurement range.

Further, psychotic experiences in people in population settings should no longer be viewed solely as indicating risk for psychotic illness such as schizophrenia. Instead, they may indicate severity of CMD that may fluctuate and, in many instances, resolve (Khandaker *et al.* 2013). Clinical assessments in people suffering what have hitherto been considered at-risk mental states indicate that the majority have affective or anxiety disorders, with suicidal features being common (Hui *et al.* 2013). Our findings argue against the need for new categories such as the 'psychosis risk state' and provide evidence that psychotic phenomena are part of the panoply of symptoms that reflect mental ill-health; their presence indicates that ill-health is severe rather than qualitatively different (Murray & Jones, 2012). That said, the presence of residual information conveyed by psychotic phenomena (but not depression and anxiety) beyond the common factor means that they can indicate other processes that may indicate psychotic illness; this requires further research.

These findings suggest that ignoring psychotic experiences curtails the proper measurement of mental

distress in the general population; the upper end of severity is inadequately addressed, akin to using a 25 cm ruler for a 30 cm problem. Few widely used measurement scales for common psychiatric morbidity include psychotic experiences; for example: the General Health Questionnaire (Goldberg & Hillier, 1979), K-scales (Kessler *et al.* 2002), Clinical Interview Schedule – revised (Lewis *et al.* 1992), Hospital Anxiety and Depression Scale (Zigmond & Snaith, 1983), MFQ (Angold *et al.* 1995). Psychotic experiences should, therefore, be included alongside symptoms of depression and anxiety as part of the measurement of mental distress, even when the goal is screening.

The presence of a common, underlying trait may explain the complete lack of specificity of risk factors (Kounali *et al.* 2014). For example, early life adversity is a well-replicated risk factor for both adult psychotic illness as well as depressive and anxiety disorders (Widom *et al.* 2007; Varese *et al.* 2012). Neurodevelopmental differences are a risk factor for both adult depression (van Os *et al.* 1997) and schizophrenia (Jones *et al.* 1994; Khandaker *et al.* 2011). Inflammatory, autoimmune and infectious mechanisms have been associated with both depression and psychotic disorders in adult life (Benros *et al.* 2011, 2013; Khandaker *et al.* 2012, 2014), and genome-wide association studies have demonstrated the existence of common single nucleotide polymorphisms (O'Donovan *et al.* 2008; Green *et al.* 2010; Smoller *et al.* 2013). Future research concerning aetiology and pathophysiology of mental illness should consider CMD as a single phenotype, acknowledging the presence of psychotic phenomena in its more severe manifestations. However, these findings do not address how specific psychiatric syndromes emerge (Kirkbride & Jones, 2011).

Strengths of our study include cross-validation of results over two epidemiological samples and the use of recent developments in psychometrics appropriate for potentially skewed latent variables and clustering in the data. Limitations include minor differences in the data collection of the two studies. The relatively small sample size of the ROOTS cohort in comparison with ALSPAC may have led to the slightly discrepant fit indices, but our model addresses potential differences in measurement mode through the orthogonal factors for each instrument or set of items. We analysed non-clinical data, so the extension to a clinical setting requires empirical investigation. Over half of the original ALSPAC cohort did not attend psychiatric assessments at age 13 years. Examination of successive follow-up data from the cohort suggests that attrition is associated with male gender, minority ethnic, and lower socio-economic status (Boyd *et al.* 2013). However, there is no evidence of difference in

co-variation of depressive and psychotic experiences between those included in our analyses and those who were lost to follow-up (Wolke *et al.* 2009). The selection of the semi-parametric approach constraining model parameters across latent classes might be over-restrictive. Cross-validation of the bi-factor model over different measures of depressive, anxiety and psychotic experiences would further strengthen the generalizability of the CMD concept. The current work could also be extended by including a wider range of psychopathology measures such as those associated with obsessive-compulsive disorder and attention-deficit/hyperactivity disorder. Competing models might place these items on the single distress factor or on separate dimensions. In the future, longitudinal studies with repeated assessments for mood, anxiety and psychotic symptoms analysed within the framework we propose would be useful in order to understand their relationships over time.

In conclusion, data from two methodologically similar epidemiological studies indicate that psychotic experiences and depressive and anxiety symptoms indicate a single, underlying dimension of CMD. Psychotic experiences indicate the more severe end of this factor. The results suggest that psychotic experiences should be included in the assessment of what have hitherto been seen as mild to moderate depressive and anxiety disorders. Diagnostic classification systems should acknowledge that psychotic phenomena occur beyond current concepts of schizophrenia-like disorders and the most severe affective syndromes, particularly in young adults where they appear to be part of a broad range of mental symptoms.

Supplementary material

For supplementary material accompanying this paper visit <http://dx.doi.org/10.1017/S003329171400261X>

Acknowledgements

The present study was supported by the Wellcome Trust (095844/Z/11/Z and 088869/Z/09/Z; I.M.G., P.B.J. and T.J.C.) and the National Institute for Health Research (NIHR) (RP-PG-0606-1335; P.B.J.) that also supported J.S.; and by a doctoral research training fellowship from the Wellcome Trust to G.M.K. (094790/Z/10/Z). The UK Medical Research Council and the Wellcome Trust (grant reference 092731) and the University of Bristol provide core support for ALSPAC. The ROOTS study was supported by the Wellcome Trust (grant reference 074296), the NIHR Collaboration for Leadership in Applied Health Research & Care East of England (CLAHRC-EoE) and the NIHR Cambridge Biomedical Research

Centre. The funding bodies had no role in study design; in the collection, analysis, and interpretation of data; in the writing of the report; and in the decision to submit the paper for publication. We are grateful to all ALSPAC and ROOTS participants and their families, and the wider study teams which included midwives, interviewers, computer and laboratory technicians, clerical workers, research scientists, volunteers, managers, receptionists and nurses.

Declaration of Interest

None.

References

- Akaike H (1974). A new look at the statistical model identification. *IEEE Transactions on Automatic Control* **19**, 716–723.
- American Psychiatric Association (1980). *Diagnostic and Statistical Manual of Mental Disorders*. American Psychiatric Association: Washington, DC.
- American Psychiatric Association (2013). *Diagnostic and Statistical Manual of Mental Disorders*. American Psychiatric Publishing: Arlington, VA.
- Angold A, Costello EJ, Messer SC, Pickles A, Winder F, Silver D (1995). The development of a short questionnaire for use in epidemiological studies of depression in children and adolescents. *International Journal of Methods in Psychiatric Research* **5**, 237–249.
- Benros ME, Nielsen PR, Nordentoft M, Eaton WW, Dalton SO, Mortensen PB (2011). Autoimmune diseases and severe infections as risk factors for schizophrenia: a 30-year population-based register study. *American Journal of Psychiatry* **168**, 1303–1310.
- Benros ME, Waltoft BL, Nordentoft M, Ostergaard SD, Eaton WW, Krogh J, Mortensen PB (2013). Autoimmune diseases and severe infections as risk factors for mood disorders: a nationwide study. *JAMA Psychiatry* **70**, 812–820.
- Boyd A, Golding J, Macleod J, Lawlor DA, Fraser A, Henderson J, Molloy L, Ness A, Ring S, Davey Smith G (2013). Cohort profile: the ‘children of the 90s’ – the index offspring of the Avon Longitudinal Study of Parents and Children. *International Journal of Epidemiology* **42**, 111–127.
- Caspi A, Houts RM, Belsky DW, Goldman-Mellor SJ, Harrington H, Israel S, Meier MH, Ramrakha S, Shalev I, Poulton P, Moffitt TE (2014). The p factor: one general psychopathology factor in the structure of psychiatric disorders? *Clinical Psychological Science* **2**, 119–137.
- Foulds GA, Bedford A (1975). Hierarchy of classes of personal illness. *Psychological Medicine* **5**, 181–192.
- Fraser A, Macdonald-Wallis C, Tilling K, Boyd A, Golding J, Davey Smith G, Henderson J, Macleod J, Molloy L, Ness A, Ring S, Nelson SM, Lawlor DA (2013). Cohort profile: the Avon Longitudinal Study of Parents and Children: ALSPAC mothers cohort. *International Journal of Epidemiology* **42**, 97–110.
- Goldberg DP, Bridges K, Duncan-Jones P, Grayson D (1987). Dimensions of neuroses seen in primary-care settings. *Psychological Medicine* **17**, 461–470.
- Goldberg DP, Hillier VF (1979). A scaled version of the General Health Questionnaire. *Psychological Medicine* **9**, 139–145.
- Goodman R (1997). The Strengths and Difficulties Questionnaire: a research note. *Journal of Child Psychology and Psychiatry* **38**, 581–586.
- Goodyer IM, Croudace T, Dunn V, Herbert J, Jones PB (2010). Cohort profile: risk patterns and processes for psychopathology emerging during adolescence: the ROOTS project. *International Journal of Epidemiology* **39**, 361–369.
- Green EK, Grozeva D, Jones I, Jones L, Kirov G, Caesar S, Gordon-Smith K, Fraser C, Forty L, Russell E, Hamshere ML, Moskvina V, Nikolov I, Farmer A, McGuffin P; Wellcome Trust Case Control Consortium, Holmans PA, Owen MJ, O’Donovan MC, Craddock N (2010). The bipolar disorder risk allele at CACNA1C also confers risk of recurrent major depression and of schizophrenia. *Molecular Psychiatry* **15**, 1016–1022.
- Hanssen M, Peeters F, Krabbendam L, Radstake S, Verdoux H, van Os J (2003). How psychotic are individuals with non-psychotic disorders? *Social Psychiatry and Psychiatric Epidemiology* **38**, 149–154.
- Horwood J, Salvi G, Thomas K, Duffy L, Gunnell D, Hollis C, Lewis G, Menezes P, Thompson A, Wolke D, Zammit S, Harrison G (2008). IQ and non-clinical psychotic symptoms in 12-year-olds: results from the ALSPAC birth cohort. *British Journal of Psychiatry* **193**, 185–191.
- Hui C, Morcillo C, Russo DA, Stochl J, Shelley GF, Painter M, Jones PB, Perez J (2013). Psychiatric morbidity, functioning and quality of life in young people at clinical high risk for psychosis. *Schizophrenia Research* **148**, 175–180.
- Jones P, Rodgers B, Murray R, Marmot M (1994). Child development risk factors for adult schizophrenia in the British 1946 birth cohort. *Lancet* **344**, 1398–1402.
- Kass RE, Raftery AE (1995). Bayes factors. *Journal of the American Statistical Association* **90**, 773–795.
- Kelleher I, Connor D, Clarke MC, Devlin N, Harley M, Cannon M (2012a). Prevalence of psychotic symptoms in childhood and adolescence: a systematic review and meta-analysis of population-based studies. *Psychological Medicine* **42**, 1857–1863.
- Kelleher I, Keeley H, Corcoran P, Lynch F, Fitzpatrick C, Devlin N, Molloy C, Roddy S, Clarke MC, Harley M, Arseneault L, Wasserman C, Carli V, Sarchiapone M, Hoven C, Wasserman D, Cannon M (2012b). Clinicopathological significance of psychotic experiences in non-psychotic young people: evidence from four population-based studies. *British Journal of Psychiatry* **201**, 26–32.
- Kessler RC, Andrews G, Colpe LJ, Hiripi E, Mroczek DK, Normand SL, Walters EE, Zaslavsky AM (2002). Short screening scales to monitor population prevalences and trends in non-specific psychological distress. *Psychological Medicine* **32**, 959–976.
- Khandaker GM, Barnett JH, White IR, Jones PB (2011). A quantitative meta-analysis of population-based studies of

- premorbid intelligence and schizophrenia. *Schizophrenia Research* **132**, 220–227.
- Khandaker GM, Clarke M, Cannon M, Jones PB** (2013). Schizophrenia and related psychosis. In *A Life Course Approach to Mental Disorders* (ed. K. C. Koenen, S. Rudenstine, E. Susser and S. Galea), pp. 61–75. Oxford University Press.
- Khandaker GM, Pearson RM, Zammit S, Lewis G, Jones PB** (2014). Association of serum interleukin 6 and C-reactive protein in childhood with depression and psychosis in young adult life: a population-based longitudinal study. *JAMA Psychiatry* **71**, 1121–1128.
- Khandaker GM, Zimbron J, Dalman C, Lewis G, Jones PB** (2012). Childhood infection and adult schizophrenia: a meta-analysis of population-based studies. *Schizophrenia Research* **139**, 161–168.
- Kirkbride JB, Jones PB** (2011). The prevention of schizophrenia – what can we learn from eco-epidemiology? *Schizophrenia Bulletin* **37**, 262–271.
- Kounali D, Zammit S, Wiles N, Sullivan S, Cannon M, Stochl J, Jones P, Mahedy L, Gage SH, Heron J, Lewis G** (2014). Common versus psychopathology-specific risk factors for psychotic experiences and depression during adolescence. *Psychological Medicine* **44**, 2557–2566.
- Krueger RF** (1999). The structure of common mental disorders. *Archives of General Psychiatry* **56**, 921–926.
- Lewis G, Pelosi AJ, Araya R, Dunn G** (1992). Measuring psychiatric disorder in the community: a standardized assessment for use by lay interviewers. *Psychological Medicine* **22**, 465–486.
- Lichtenstein P, Yip BH, Bjork C, Pawitan Y, Cannon TD, Sullivan PF, Hultman CM** (2009). Common genetic determinants of schizophrenia and bipolar disorder in Swedish families: a population-based study. *Lancet* **373**, 234–239.
- Loehlin JC** (1992). *Latent Variable Models: an Introduction to Factor, Path, and Structural Analysis*. Lawrence Erlbaum: Hillsdale, NJ.
- Masyn KE, Henderson CE, Greenbaum PE** (2010). Exploring the latent structures of psychological constructs in social development using the dimensional–categorical spectrum. *Social Development* **19**, 470–493.
- Murray GK, Jones PB** (2012). Psychotic symptoms in young people without psychotic illness: mechanisms and meaning. *British Journal of Psychiatry* **201**, 4–6.
- Nicewander WA** (1993). Some relationships between the information function of IRT and the signal/noise ratio and reliability coefficient of classical test theory. *Psychometrika* **58**, 139–141.
- Nishida A, Tani H, Nishimura Y, Kajiki N, Inoue K, Okada M, Sasaki T, Okazaki Y** (2008). Associations between psychotic-like experiences and mental health status and other psychopathologies among Japanese early teens. *Schizophrenia Research* **99**, 125–133.
- O'Donovan MC, Craddock N, Norton N, Williams H, Peirce T, Moskvina V, Nikolov I, Hamshere M, Carroll L, Georgieva L, Dwyer S, Holmans P, Marchini JL, Spencer CC, Howie B, Leung HT, Hartmann AM, Moller HJ, Morris DW, Shi Y, Feng G, Hoffmann P, Propping P, Vasilescu C, Maier W, Rietschel M, Zammit S, Schumacher J, Quinn EM, Schulze TG, Williams NM, Giegling I, Iwata N, Ikeda M, Darvasi A, Shifman S, He L, Duan J, Sanders AR, Levinson DF, Gejman PV, Cichon S, Nothen MM, Gill M, Corvin A, Rujescu D, Kirov G, Owen MJ, Buccola NG, Mowry BJ, Freedman R, Amin F, Black DW, Silverman JM, Byerley WF, Cloninger CR; Molecular Genetics of Schizophrenia Collaboration** (2008). Identification of loci associated with schizophrenia by genome-wide association and follow-up. *Nature Genetics* **40**, 1053–1055.
- Polanczyk G, Moffitt TE, Arseneault L, Cannon M, Ambler A, Keefe RS, Houts R, Odgers CL, Caspi A** (2010). Etiological and clinical features of childhood psychotic symptoms: results from a birth cohort. *Archives of General Psychiatry* **67**, 328–338.
- Poulton R, Caspi A, Moffitt TE, Cannon M, Murray R, Harrington H** (2000). Children's self-reported psychotic symptoms and adult schizophreniform disorder: a 15-year longitudinal study. *Archives of General Psychiatry* **57**, 1053–1058.
- Rosler W, Hengartner MP, Ajdacic-Gross V, Haker H, Gamma A, Angst J** (2011). Sub-clinical psychosis symptoms in young adults are risk factors for subsequent common mental disorders. *Schizophrenia Research* **131**, 18–23.
- Schwarz GE** (1978). Estimating the dimension of a model. *Annals of Statistics* **6**, 461–464.
- Sclove S** (1987). Application of model-selection criteria to some problems in multivariate analysis. *Psychometrika* **52**, 333–343.
- Shaffer D, Fisher P, Lucas CP, Dulcan MK, Schwab-Stone ME** (2000). NIMH Diagnostic Interview Schedule for Children Version IV (NIMH DISC-IV): description, differences from previous versions, and reliability of some common diagnoses. *Journal of the American Academy of Child and Adolescent Psychiatry* **39**, 28–38.
- Sharp C, Goodyer IM, Croudace TJ** (2006). The Short Mood and Feelings Questionnaire (SMFQ): a unidimensional item response theory and categorical data factor analysis of self-report ratings from a community sample of 7- through 11-year-old children. *Journal of Abnormal Child Psychology* **34**, 379–391.
- Smoller JW, Craddock N, Kendler K, Lee PH, Neale BM, Nurnberger JI, Ripke S, Santangelo S, Sullivan PF** (2013). Identification of risk loci with shared effects on five major psychiatric disorders: a genome-wide analysis. *Lancet* **381**, 1371–1379.
- Spearman C** (1904). "General intelligence," objectively determined and measured. *American Journal of Psychology* **15**, 201–292.
- Sturt E** (1981). Hierarchical patterns in the distribution of psychiatric symptoms. *Psychological Medicine* **11**, 783–792.
- Sullivan SA, Wiles N, Kounali D, Lewis G, Heron J, Cannon M, Mahedy L, Jones PB, Stochl J, Zammit S** (2014). Longitudinal associations between adolescent psychotic experiences and depressive symptoms. *PLOS ONE* **9**, e105758.
- Van der Linden WJ, Hambleton RK** (eds) (1997). *Handbook of Modern Item Response Theory*. Springer: New York.

- van Os J, Jones P, Lewis G, Wadsworth M, Murray R** (1997). Developmental precursors of affective illness in a general population birth cohort. *Archives of General Psychiatry* **54**, 625–631.
- van Os J, Linscott RJ, Myin-Germeys I, Delespaul P, Krabbendam L** (2009). A systematic review and meta-analysis of the psychosis continuum: evidence for a psychosis proneness–persistence–impairment model of psychotic disorder. *Psychological Medicine* **39**, 179–195.
- van Rossum I, Dominguez M-d-G, Lieb R, Wittchen H-U, van Os J** (2011). Affective dysregulation and reality distortion: a 10-year prospective study of their association and clinical relevance. *Schizophrenia Bulletin* **37**, 561–571.
- Varese F, Smeets F, Drukker M, Lieverse R, Lataster T, Viechtbauer W, Read J, van Os J, Bentall RP** (2012). Childhood adversities increase the risk of psychosis: a meta-analysis of patient–control, prospective- and cross-sectional cohort studies. *Schizophrenia Bulletin* **38**, 661–671.
- Varghese D, Scott J, Welham J, Bor W, Najman J, O’Callaghan M, Williams G, McGrath J** (2011). Psychotic-like experiences in major depression and anxiety disorders: a population-based survey in young adults. *Schizophrenia Bulletin* **37**, 389–393.
- Verdoux H, van Os J, Maurice-Tison S, Gay B, Salamon R, Bourgeois ML** (1999). Increased occurrence of depression in psychosis-prone subjects: a follow-up study in primary care settings. *Comprehensive Psychiatry* **40**, 462–468.
- Widom CS, DuMont K, Czaja SJ** (2007). A prospective investigation of major depressive disorder and comorbidity in abused and neglected children grown up. *Archives of General Psychiatry* **64**, 49–56.
- Wigman JT, van Os J, Abidi L, Huibers MJ, Roelofs J, Arntz A, Kelleher I, Peeters FP** (2014). Subclinical psychotic experiences and bipolar spectrum features in depression: association with outcome of psychotherapy. *Psychological Medicine* **44**, 325–336.
- Wigman JT, van Nierop M, Vollebergh WAM, Lieb R, Beesdo-Baum K, Wittchen H-U, van Os J** (2012). Evidence that psychotic symptoms are prevalent in disorders of anxiety and depression, impacting on illness onset, risk, and severity – implications for diagnosis and ultra-high risk research. *Schizophrenia Bulletin* **38**, 247–257.
- Wolke D, Waylen A, Samara M, Steer C, Goodman R, Ford T, Lamberts K** (2009). Selective drop-out in longitudinal studies and non-biased prediction of behaviour disorders. *British Journal of Psychiatry* **195**, 249–256.
- World Health Organization** (1992). *The ICD-10 Classification of Mental and Behavioural Disorders: Clinical Descriptions and Diagnostic Guidelines*. World Health Organization: Geneva.
- World Health Organization** (1994). *SCAN: Schedules for Clinical Assessment in Neuropsychiatry Version 2.0*. Psychiatric Publishers International/American Psychiatric Press Inc.: Geneva, Switzerland.
- Zigmond AS, Snaith RP** (1983). The Hospital Anxiety and Depression Scale. *Acta Psychiatrica Scandinavica* **67**, 361–370.