

# A randomized double-blind placebo-controlled trial of treatment as usual plus exogenous slow-release melatonin (6 mg) or placebo for sleep disturbance and depressed mood

Marc Antony Serfaty<sup>a,c</sup>, Debbie Osborne<sup>a</sup>, Marta J. Buszewicz<sup>b</sup>, Robert Blizard<sup>a</sup> and Peter W. Raven<sup>a</sup>

Sleep disturbance is common in major depressive disorder (MDD), and is often characterized by early-morning waking. Melatonin is a hypnotic and synchronizes circadian rhythms. It may also be an antidepressant. The melatonin agonists, ramelteon and agomelatine, have hypnotic and antidepressant properties, but there is a dearth of trials investigating the use of melatonin in MDD. This randomized, controlled trial aimed to determine whether exogenous melatonin is a sleep promoter and antidepressant. Thirty-three participants with a *Diagnostic and Statistical Manual of Mental Disorders* (fourth edition) diagnosis of MDD and early-morning waking were selected for a 4-week, randomized, double-blind trial of slow-release melatonin (6 mg; vs. placebo) given at bedtime over 4 weeks. Sleep was measured subjectively using sleep diaries and the Leeds Sleep Evaluation Questionnaire and objectively using wrist actigraphy. Of the 33 participants, 31 completed the trial. General Linear Modelling showed significant improvements in depression and sleep over time, but this was not specific to melatonin. However, there was a trend towards an improvement in mood with melatonin, and no adverse side effects

were observed. In conclusion, melatonin may be beneficial for treating MDD, it seems to be safe and well tolerated, but its potential for treating depression in people who do not wish to take antidepressants requires further evaluation. *Int Clin Psychopharmacol* 25:132–142 © 2010 Wolters Kluwer Health | Lippincott Williams & Wilkins.

*International Clinical Psychopharmacology* 2010, 25:132–142

**Keywords:** major depressive disorder, melatonin, mood, randomized controlled trial, sleep

<sup>a</sup>Research Department of Mental Health Sciences (Royal Free Campus), UCL Medical School, <sup>b</sup>Research Department of Primary Care and Population Health (Whittington Campus), University College Medical School and <sup>c</sup>The Priory Hospital North London, London, UK

Correspondence to Dr Marc Antony Serfaty, BSc (Hons), MBChB, MRCPsych, MPhil, MD, Research Department of Mental Health Sciences (Royal Free Campus), University College Medical School, Rowland Hill Street, London NW3 2PF, UK  
Tel: +44 20 7794 0500; fax: +44 20 7830 2808;  
e-mail: m.serfaty@medsch.ucl.ac.uk

Received 30 May 2008 Accepted 26 March 2009

## Introduction

Disturbed sleep is a characteristic feature (Benca *et al.*, 1992; Van Bommel, 1997) and predictor (Perlis *et al.*, 1997) of depressive disorder. Manipulations of the sleep–wake cycle may improve depressive symptoms (Van Bommel, 1997).

Melatonin is one of the main *zeitgebers* (external indicators of time) controlling the sleep–wake cycle in humans. Its secretion is stimulated by darkness and suppressed by light (Arendt, 1995). Changes in circadian rhythm occur in affective disorders (Wirz-Justice, 2006), and disruption of the sleep–wake cycle is possibly mediated through melatonin. In seasonal affective disorder (SAD), melatonin secretion is usually phase delayed (Lewy *et al.*, 1987, 2006) and associated with waking later than usual. Early-morning waking is characteristic of nonseasonal depression, but there is no consensus as to the accompanying disturbance of melatonin secretion (Crasson *et al.*, 2004), in which there may be decreased amplitude (Wetterberg,

1978; Frazer *et al.*, 1986; McIntyre *et al.*, 1989), increased amplitude (Parry *et al.*, 2006), phase advances (Checkley, 1989; Sekula *et al.*, 1997) or phase delays (Crasson *et al.*, 2004) of nocturnal melatonin. It has also been suggested that melatonin dysfunction is not central to depression (Childs *et al.*, 1995), but is rather an epiphenomenon.

The effects of exogenous melatonin as a chronobiotic (i.e. a substance that shifts rhythms) (Arendt and Skene, 2005) and a hypnotic (Zhdanova, 2005a, 2005b) have been documented since the 1970s. The hypnotic effect is probably brought about by inducing sleepiness through thermoregulatory changes (Cagnacci *et al.*, 1997). As chronobiotic melatonin has been used to treat nonpsychiatric disorders such as insomnia (Zhdanova *et al.*, 2001), free running circadian rhythms in blind people (Sack *et al.*, 2000), jet lag (Herxheimer and Petrie, 2005) and sleep disorders associated with shift work (Skene *et al.*, 1996). The use of melatonin in psychiatric disorders was summarized in the study by Serfaty (2006). Meta-analyses of the therapeutic effects of melatonin have generated inconsistent results (Brzezinski *et al.*, 2005;

Preliminary results of this study were presented at a virtual meeting of the Society for Light Treatment and Biological Rhythms (Serfaty *et al.*, 2003).

Buscemi *et al.*, 2006), but overall, evidence suggests that melatonin is an effective chronobiotic and a hypnotic, which benefit a number of people (Arendt, 2006).

In SAD, melatonin exerts a corrective phase advance (Lewy *et al.*, 1998, 2003, 2006; Leppamaki *et al.*, 2003), but its effects on mood are equivocal, with worsening symptoms (Rosenthal *et al.*, 1985), no change in symptoms (Wirz-Justice *et al.*, 1990; Leppamaki *et al.*, 2003; Lewy *et al.*, 2003) or improvements in mood (Lewy *et al.*, 1997, 1998).

In nonseasonal depression, the use of melatonin fell into disrepute after a methodologically unsound trial by Carman *et al.* (1976) suggested that melatonin was ineffective in the treatment of depression and was associated with psychotic symptoms. In Carman *et al.*'s (1976) study, patients received massive doses of melatonin, in some cases intravenously, throughout the day. Patients also had multiple diagnoses. Carman *et al.*'s (1976) negative finding may explain why no further studies using melatonin for treating depression were published for more than two decades. However, in 1997 De Vries and Peeters published a case report suggesting an improvement in depression with 5 mg of melatonin, and an open-label study by Fainstein *et al.* (1997) suggested that administration of melatonin (3 mg nocte) for 21 days improved sleep quality in nine older people with depression. Dolberg *et al.* (1998) conducted a randomized controlled trial (RCT) of melatonin (5 mg; or placebo) as an adjunct to fluoxetine (20 mg) in 19 outpatient volunteers with a *Diagnostic and Statistical Manual of Mental Disorders* (fourth edition) classification of major depression (American and Association, 1994). Melatonin was associated with a significant improvement in sleep, but not mood. Similar findings were reported in six out of eight outpatients with treatment-resistant depression (Dalton *et al.*, 2000). A more recent report suggests that melatonin may be helpful in depressed postmenopausal women (Bellipanni *et al.*, 2005).

The use of melatonergic agonists, ramelteon and agomelatine, on sleep and mood has also been investigated. Ramelteon is a selective MT<sub>1</sub>/MT<sub>2</sub> receptor agonist, approved by the US Food and Drug Administration (FDA) in 2005, for the treatment of insomnia. It improves sleep latency by 21 min (compared with 12 min with placebo) in older people with insomnia (Roth *et al.*, 2005, 2006). Agomelatine (S-20098) is a melatonin agonist and selective 5-HT<sub>2c</sub> antagonist. Significant improvements in Hamilton Depression Rating Scale (HDRS) scores have also been reported with agomelatine compared with placebo, and its use as novel antidepressant for major depressive disorder seems promising (Loo *et al.*, 2002, 2003; Olie and Emsley, 2005; Kennedy and Emsley, 2006), with approval recently having been

granted by the European Medicines Agency. However, it remains unclear whether these beneficial effects are because of its melatonergic or 5-HT<sub>2c</sub> properties.

Theoretical and clinical evidence suggests that melatonin (or its agonists) may be beneficial for sleep disturbance, and possibly mood, in nonseasonal depression. However, the studies to date have involved small numbers of participants, with a range of diagnoses and no objective measures of sleep used. Variable doses of melatonin have been given and little consideration given to the timing of its administration, which may be crucial (Reppert and Weaver, 1995). We are reporting the largest double-blind, randomized, placebo-controlled trial of melatonin given to people with major depressive disorder. Our primary aim was to determine whether, in addition to treatment-as-usual, 4 weeks of exogenous oral slow-release melatonin (6 mg) given at bedtime resulted in a significant improvement in sleep (sleep length measured by wrist actigraphy) when compared with placebo. Our subsidiary outcome measures were other parameters of sleep and measures of depression [HDRS and Beck Depression Inventory (BDI)].

## Methods

The study was conducted in North London over 3 years and 3 months. Approval was obtained from the Royal Free Hospital and Medical School Ethics Committee. The participants, 18–65 years of age, were recruited through general practices linked to the North Central Thames Primary Care Research Network (NoCTeN) using direct general practitioner (GP) referrals, databases searches and approaches to patients in GP waiting rooms. Patients were initially asked whether they felt depressed and woke more than 1 h earlier than usual 3 days a week. If this were the case, information about the trial was then provided and those that were agreeable were screened within 3 days. If they had a score of 17 or more on the BDI (Beck *et al.*, 1961) they were given a more in-depth interview using the Schedule for Affective Disorders and Schizophrenia (Endicott and Spitzer, 1978) to ensure that they met the following entry criteria:

**Inclusion criteria:** *Diagnostic and Statistical Manual of Mental Disorders* (fourth edition; American and Association, 1994) classification for major depression (unipolar or bipolar), a score of 17 or more on the BDI and self-reported sleep of 1 h less than normal at least 3 days per week.

**Exclusion criteria:** another axis 1 diagnosis, delusions or hallucinations, active suicidal ideation, receipt of electroconvulsive therapy within the last 6 months, taking hypnotic medication, a recent change in dose or type of psychotropic medication (e.g. antidepressants, neuroleptics) within the last 4 weeks of being referred for

assessment, and disclosure of alcohol abuse on the Schedule for Affective Disorders and Schizophrenia interview. All eligible participants were then given 24 h to think about the study before consenting to take part.

### Design

The study was a 4-week, double-blind, placebo-controlled trial of melatonin or placebo in addition to treatment-as-usual received from the patient's GP. Change in medication, by the GP, was discouraged during the trial, but any changes deemed necessary were recorded, as it was not felt ethical to restrict the use of antidepressants. Participants were randomly allocated to one of two groups using random numbers generated by an independent clinical trials co-ordinator. After a week's baseline data collection, melatonin or placebo tablets were given for 4 weeks at the participant's usual bedtime. This was followed by a 1-week washout period. Slow-release melatonin (6 mg) (synthetic origin) was provided by Genzyme Pharmaceuticals Ltd. (Haverhill Operations, Haverhill, Suffolk, UK). Melatonin and placebo were identical with respect to preparation and packaging. Both the pharmacist dispensing the trial medication and the researchers were blind to the treatment received. The tablets were distinguishable only by batch number held by the manufacturer. The code for treatment allocation was only revealed once the trial was completed. At the end of the trial, patients continued with usual GP care.

### Outcome measures

#### Measures of sleep

Three measures were used: (i) Objective measures of sleep were obtained by using wrist actigraphy monitors. This is an established method based on wrist movements and uses a number of parameters derived on an algorithm described by Cole *et al.* (1992) that can distinguish sleep from wakefulness with 88% reliability. Participants pressed a button on the actigraph indicating when they went to bed and when they got up, from which the length of time in bed was calculated. The sleep onset time enables calculation of the length of time taken to fall asleep (sleep latency). It is also possible to calculate the total sleep time (TST), the cumulative length of time the person is awake after falling asleep (wake after sleep onset; WSO), the number of times the person moves when in bed (movement index), the number of awakenings and the percentage of time asleep (sleep efficiency; SE). The actigraph epoch length, which provides a cut-off time for significant movement, was set at 30 s. (ii) Subjective measures of sleep were collected using the Leeds Sleep Evaluation Questionnaire (LSEQ; Parrot and Hindmarsh, 1978). This self-completed measure used a visual analogue scale to assess four aspects of sleep: getting to sleep (GTS), quality of sleep, awakening from sleep and behaviour following wakefulness. (iii) Detailed diary information was also completed by participants to ascertain whether they had taken the melatonin, what

time did they go to bed, what time did they fall asleep, the number of awakenings, what time did they wake up and what time did they get up. In addition, participants were asked to comment about their sleep.

#### Measures of depression

Two measures were used: (i) The Beck Depression Inventory (BDI; Beck *et al.*, 1961), a widely used self-report instrument consisting of 21 questions rated on a 4-point Likert scale (0–3); and (ii) the 21-item HDRS (Hamilton, 1960). The HDRS is a 21-item observer-rated instrument that is completed following a thorough clinical interview, and as such is considered potentially more objective. Each item presents a symptom of depression and is rated according to its severity as experienced by the patient.

#### Other measures

Biases could have been introduced because of a number of factors affecting sleep. These include the time of the year (people sleep slightly longer in winter) and whether data were collected in the week or at weekends. As participants were randomized equally over the year, seasonal effects were minimal. However, data were coded for whether they were collected during the week, or on 1 or 2 weekend days. Measures of compliance with melatonin/placebo were also made by pill counts (in addition to self-reported compliance on the diary sheets). Measures of blindness of patients and rater were obtained using a visual analogue scale. The patients were asked to record any adverse events on their sleep diary charts.

The objective measures of sleep, using wrist actigraphy, were collected during the last 3 days of the baseline data collection week (week 0), the first and fourth week of the melatonin/placebo phase (weeks 1 and 4) and at the end of the washout phase (week 5). Subjective measures of sleep using the LSEQ were collected at the end of each week, and sleep diary entries were made daily by the participants. The BDI was completed at the end of each week.

All medications prescribed were recorded. This included type and dose of antidepressant. As a result of the variety of different antidepressants available, doses were also standardized against imipramine (Bollini *et al.*, 1999).

### Statistical analysis

#### Prestudy power

Power calculations were performed using Epi Info 6 (WHO) to estimate the numbers required, to test our main hypothesis and to detect a significant difference in sleep length at 80% power with a 95% confidence level. It has been suggested that normal sleep time is 6.5 h (American Sleep Disorders Association, 1990) and that it is significantly diminished in depressive disorder, with

TST being roughly 5½ h [standard deviation (SD) of 1 h] (Gillin *et al.*, 1979). We therefore hypothesized that depressed people would sleep an hour less than nondepressed individuals and that melatonin would normalize TST. Thus, using the above data and a similar SD of 1 h for both groups, at 80% power at a *P* value less than 0.05 significance, 17 people would be required in each group (total of 34).

Studies of depression in primary care populations suggest that there is a SD of 4 points in the HDRS (Mynors-Wallis *et al.*, 1995). A 5-point change in mean HDRS score is usually taken as clinically significant. This corresponds to an effect size of 1.2 SDs. Thus, 11 participants (total of 22) would be required in each arm to show an advantage of melatonin over placebo and to show a significant change in mood in the treatment of depression.

#### **Missing data**

Actigraph data were collected during the last 3 days of four periods: the baseline period, the first and fourth week of melatonin and the washout period. As data points were normally distributed, data were averaged for each period. In cases in which baseline data were missing, average values for each group (melatonin or placebo) were entered. In cases in which sets of data were missing for the subsequent time period, the last observation carried forward (LOCF) was used.

#### **Analysis**

Data were analysed using the Statistical Package for Social Sciences (version 10.1.3; SPSS Inc., Chicago, Illinois, USA). Data collected from actigraphs were converted into an analysable form and then analysed using the software supplied by Neurim Pharmaceuticals Ltd. (Tel Aviv, Israel).

Categorical or skewed baseline data were examined using the  $\chi^2$  test. In instances in which data were normally distributed, baseline differences were examined using unpaired *t*-tests. General Linear Modelling (GLM) was used to measure differences over time and differences between melatonin and placebo. In instances in which Mauchly's test for sphericity showed a significant effect, Greenhouse–Geisser statistics were used. We also used the Generalized Estimating Equation (GEE) (Zeger and Liang, 1986) for BDI applying an exchangeable correlation matrix for continuous BDI outcome and adjusting for baseline BDI and time.

Average data sets for each of the periods under study were entered into the analysis. Data were then analysed by 'group' (melatonin or placebo) to examine whether this affected the outcome. Both, a completer's analysis and an intention-to-treat analysis, were performed, and

both gave consistent results. However, for convenience, only the data for the intention-to-treat analysis, using LOCF, is presented, but a more detailed analysis, available in the study by Serfaty (2006), was also performed for completers only, and this generated similar results. Subsidiary analysis of sleep was performed to determine the accuracy of self-report data by correlating this with objective actigraph data.

## **Results**

A total of 203 people were approached for the study: 80 participants were referred directly by their GPs, 68 were recruited through screening questionnaires in GP surgeries and 33 through a database search of people with a earlier history of depression, and a further 22 contacted the research team after having seen an information sheet or heard about the study by word-of-mouth from a friend or relative.

Of the 170 participants who did not then participate in the study, 84 did not have disturbance of sleep or diagnostic criteria for depression, 44 did not wish to participate, 31 could not be contacted/did not respond to calls and 11 did not have sufficient command over English.

Of the 33 patients recruited to the study, 16 were referred by their GP, 13 were identified from GP databases and four self-referred. For a summary of participant flow, see Fig. 1.

#### **Dropouts**

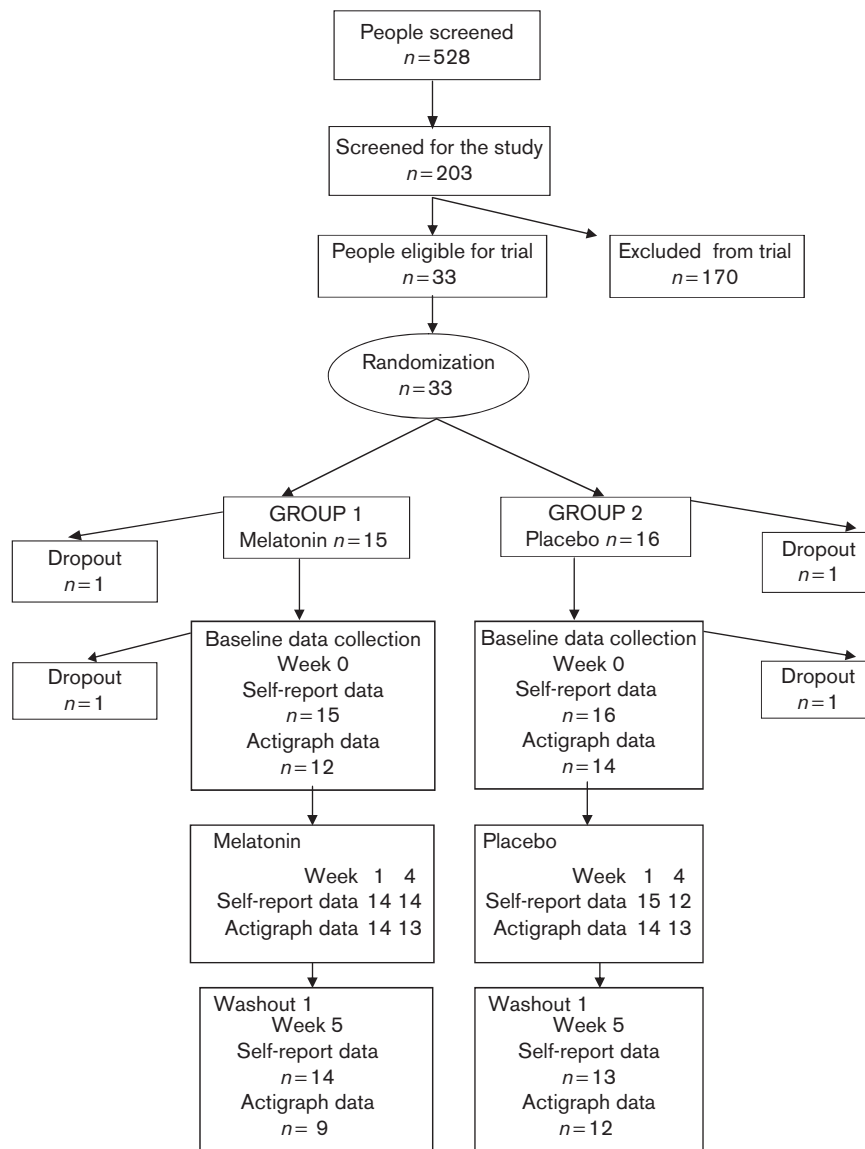
Of the 33 initially recruited, two participants dropped out immediately because they felt better.

Missing data analysis: this was performed on 31 sets of self-report data and 29 sets of actigraph data. Mean baseline scores for actigraph recordings were substituted for the two participants for whom data were missing at baseline, and in instances in which follow-up data were missing, the LOCF was used. Baseline self-report questionnaires were completed by 31 participants and baseline actigraph data were available for 29 participants, because two participants had forgotten to wear the device and in two cases the actigraph did not function. At completion, full data sets were available from self-report data for 27 participants and full sets of actigraph data were available for 21 participants, for the same reasons as above. Data for the intention-to-treat analysis were available for 31 participants.

#### **Baseline data**

There were no significant differences between groups for participants' age, and the number of people taking prescribed antidepressants (see below) or used hypnotic medication as required (Table 1).

Fig. 1



Flow diagram for randomized, controlled trial of melatonin versus placebo for the treatment of major depressive disorder.

Biases may be introduced because of a number of factors affecting sleep. These include time of year (people sleep slightly longer in winter) and whether sleep data are collected in the week or at weekends. As participants were randomized over the year, seasonal effects were likely to be minimal. Analysis to examine whether data in either group (melatonin or placebo) was more likely to be recorded in the week or at weekends, did not reveal any significant differences (Table 1).

There were no baseline differences in measures of depression (Table 2). Baseline measures of sleep using wrist actigraphy found that individuals who were allocated to the placebo group woke sooner after sleep onset

(d.f. = 27,  $t = 2.26$ ,  $P = 0.03$ ) and had significantly better sleep efficiency (SE) (d.f. = 27,  $t = 2.38$ ,  $P = 0.025$ ) (Table 2).

#### Antidepressant prescribing

Of those individuals who were prescribed antidepressants, 12 were in the melatonin group (five were prescribed fluoxetine, three paroxetine, one citalopram, two venlafaxine and one amitriptyline) and 10 were allocated to the placebo group (three were prescribed fluoxetine, four citalopram, one paroxetine, one nefazodone and one venlafaxine). Antidepressants were standardized into equivalent doses of imipramine (Bollini *et al.*, 1999). At baseline, there were no differences in the

dose of the antidepressant prescribed between the placebo and melatonin group. Only five people in both the melatonin group and the placebo group, respectively, were prescribed a therapeutic dose of 100 mg or more of imipramine. Only four people in each group had been diagnosed at least 12 weeks before entry into the trial and were taking an antidepressant for at least 12 weeks. There were no changes in dose or antidepressant prescription from 2 weeks before entry to the study to the endpoint (final washout).

### Sleep and depression outcomes

Sleep diary data using GLM revealed a shortened time taken to get to sleep ( $F = 5.2$ ,  $d.f. = 4$ ,  $P = 0.03$ ), but this was not specific to melatonin, as there was no time by group (melatonin or placebo) interaction.

**Table 1 Basic demographic and other information of 31 participants on melatonin treatment depression study**

	Melatonin	Placebo	$t$ or $\chi^2$ test	Significant
Sex				
Male	3	1	Small numbers	NS
Female	12	15		
Total	15	16		
Age (years)	38.1 (SD 11.6)	42.0 (SD 12.6)	0.9	NS
Time of illness to diagnosis (weeks)	11.2 (SD 11.7)	43.8 (SD 91.6)	1.3	NS
Antidepressant medication				
Yes	12	10	Small numbers	NS
No	3	6		
Total	15	16		
Number of days data collected in week or weekends				
Collected in the week	10	7	1.3 (d.f. 2)	NS (0.4)
One weekend	5	7		
Two weekends	1	3		

The LSEQ found a significant improvement in sleep for the group as a whole (Table 2). GLM showed significant improvements with time for GTS ( $F = 6.6$ ,  $d.f. = 3.2$ ,  $P < 0.001$ ) and quality of sleep ( $F = 4.8$ ,  $d.f. = 3.6$ ,  $P < 0.002$ ), but did not show a time by group (melatonin or placebo) interaction.

Question 16 on the BDI and questions 4, 5 and 6 on the HDRS specifically asked about sleep. These items did not show any significant differences in sleep between melatonin and placebo.

Wrist actigraphy measures did not show any improvements in sleep using GLM; although there was a trend towards improved SE in the melatonin group, it is notable that patients in the melatonin group had significantly poorer SE at baseline (Table 2).

Data were analysed to examine whether subjective and objective measures of sleep were correlated. There was no correlation between reports from diary sheets and objective information on sleep obtained from wrist actigraphy.

Using GLM, the HDRS score changed significantly with time ( $F = 5.0$ ,  $d.f. = 26$ ,  $P < 0.01$ ), but there was no time-by-group (melatonin or placebo) interaction. GLM for the six time points found a significant change in BDI score ( $F = 4.7$ ,  $d.f. = 2.15$ ,  $P = 0.01$ ) with time (Fig. 2), but no time-by-group (melatonin or placebo) interaction. GEE found that the mean treatment difference between melatonin and placebo for the BDI was 2.03 (95% confidence interval:  $-6.30$  to  $2.25$ ) in favour of melatonin; however, this was not significant.

**Table 2 Results for main measures of patients allocated to melatonin or placebo groups**

Group	Baseline		Week 1		Week 4		Washout	
	Melatonin	Placebo	Melatonin	Placebo	Melatonin	Placebo	Melatonin	Placebo
Depression measure								
BDI	25.2 (11.4)	25.2 (7.9)	23.4 (11.1)	23.0 (9.4)	20.2 (11.7)	22.8 (9.0)	18.5 (11.6)	21.7 (9.6)
HDRS	16.8 (6.1)	18.8 (3.5)	16.0 (5.3)	16.5 (4.9)	13.3 (6.7)	14.7 (5.8)	14.9 (7.9)	14.6 (6.6)
Sleep diary								
Time to sleep	69.0 (44.6)	68.5 (75.0)	67.5 (50.0)	59.0 (51.4)	52.4 (40.4)	43.9 (42.5)	50.9 (42.2)	48.2 (38.7)
Number of awakenings	3.1 (2.0)	2.3 (1.3)	2.3 (1.5)	2.1 (1.0)	2.3 (1.6)	2.1 (0.9)	2.6 (1.9)	2.0 (0.9)
LSEQ								
GTS	3.7 (2.2)	3.7 (2.0)	5.1 (2.2)	5.5 (1.7)	6.1 (1.5)	4.9 (1.8)	5.4 (1.4)	4.6 (2.2)
QOS	3.4 (2.0)	3.6 (2.0)	4.6 (2.0)	5.2 (2.0)	5.4 (2.1)	4.8 (2.0)	4.7 (2.4)	5.0 (2.4)
AFS	4.2 (2.1)	4.3 (1.9)	4.1 (1.8)	5.0 (1.8)	4.9 (1.4)	3.7 (1.6)*	5.1 (1.8)	4.4 (1.6)
BFW	4.7 (1.6)	3.9 (1.5)	4.7 (2.1)	4.6 (1.6)	5.2 (1.3)	4.0 (1.8)*	4.8 (1.8)	3.9 (1.7)
Actigraph measures (min)								
Time in bed	499.1 (67.9)	473.7 (99.3)	518.5 (79.7)	511.9 (91.8)	499.0 (82.0)	492.6 (73.8)	507.8 (105.6)	486.5 (69.8)
Sleep latency	39.8 (31.2)	21.9 (17.1)	26.9 (25.9)	23.4 (23.2)	33.3 (31.9)	28.9 (24.3)	35.6 (36.1)	31.7 (29.8)
Wake after sleep onset	76.0 (37.4)	47.6 (8.3)*	74.7 (37.1)	53.8 (34.7)	70.4 (39.5)	44.4 (32.0)*	77.9 (44.8)	43.9 (32.6)*
Total sleep time	370.7 (49.8)	91.7 (107.8)	399.0 (62.7)	422.5 (89.1)	385.0 (49.8)	401.9 (89.8)	384.9 (83.4)	394.8 (100.9)
Number of awakenings	29.7 (12.3)	24.1 (8.7)	30.4 (13.1)	26.4 (12.7)	28.5 (13.1)	23.8 (11.9)	29.3 (15.5)	22.3 (11.3)
Movement index	847.4 (481.0)	617.1 (305.6)	891.9 (509.3)	84.6 (339.1)	722.5 (310.7)	11.0 (375.0)	790.8 (371.9)	64.4 (448.6)
Sleep efficiency (%)	74.7 (8.8)	82.1 (7.5)*	77.5 (10.4)	82.8 (8.9)	78.1 (9.5)	81.2 (12.0)	76.3 (10.6)	80.6 (14.6)

Values are expressed as 'mean (SD)'

AFS, awakening from sleep; BDI, Beck Depression Inventory; BFW, behaviour following wakefulness; GTS, getting to sleep; HDRS, Hamilton Depression Rating Scale; LSEQ, Leeds Sleep Evaluation Questionnaire; QOS, quality of sleep.

\* $P < 0.05$  for unpaired  $t$ -test of between-group comparisons. General Linear Modelling stated in text.

### Blindness

Blindness was maintained, with no significant difference in scores on visual analogue scales for melatonin or placebo completed by both the researcher and the patient at the end of the first week and fourth week of melatonin/placebo.

### Adverse effects

Of those taking melatonin, poor sleep was reported by two patients, vivid dreams by one, day time sleepiness by another and a fuzzy feeling the next day by another patient. Vivid dreams were also reported during the washout period of melatonin by one patient (who was also on venlafaxine 75 mg). Of those taking placebo, poor sleep was reported by two patients, daytime sleepiness by one, vivid dreams by one (also on paroxetine 20 mg) and headaches by another.

### Discussion

This is the largest RCT investigating the use of melatonin for sleep and mood disturbance in depression. It was designed and presented in accordance with the revised CONSORT guidelines for reporting parallel group randomized trials (Moher *et al.*, 2001). With time, there was a significant improvement in subjective but not objective measures of sleep, but this was not specific to melatonin. An improvement in mood with time was also observed (Fig. 2), but this was not specific to melatonin. Melatonin was not associated with reports of significantly more adverse events.

Although the two groups were similar with respect to demographic factors and severity of depression, despite randomization, there were baseline differences in objective measures of sleep: SE was more impaired in the melatonin group, and in the placebo group participants were awake for longer (WSO) after getting to sleep.

### Validity of the measures of sleep

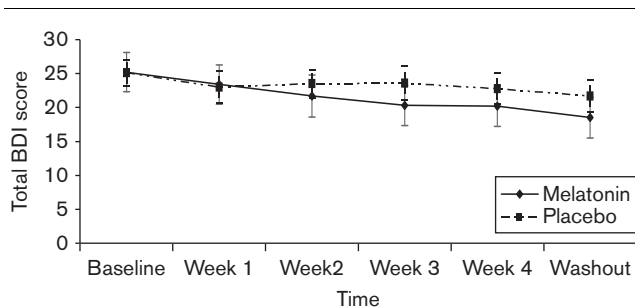
Electroencephalogram polysomnography is a valid and reliable way of measuring sleep disturbance, but is not

practical in a naturalistic setting. Wrist actigraphy showed impaired SE (78.3%) in our depressed sample, which is similar to the degree of sleep impairment reported in insomniacs (Sadeh *et al.*, 1989), and worse than the 86% SE reported in healthy individuals (Stanley, 1997). We found that self-report data correlated poorly with those obtained from wrist actigraphy, but all earlier studies investigating the use of melatonin in nonseasonal depression have relied on self-report data (Carman *et al.*, 1976; De Vries and Peeters, 1997; Fainstein *et al.*, 1997; Dolberg *et al.*, 1998; Dalton *et al.*, 2000), which raises concerns about the authors' conclusions. The validity and reliability of self-report sleep/activity logs, which may not always be filled out accurately (Stanley, 1997), is also highly questionable. There are inherent problems with applying established sleep questionnaires to depressed patients. The LSEQ (Parrot and Hindmarsh, 1978) asks about sleep over the last week, but reports may be influenced by the persons' ability to recall and by their current mood state; both these factors are influenced by depression. Alternative methods such as independent ratings of sleep by others, for example by a partner, relative or healthcare professionals, may be no better (Serfaty *et al.*, 2002). Objective measures of sleep are therefore necessary.

### Possible reasons for no significant effect of melatonin on sleep

Subjective and objective measures of sleep suggested an improvement in GTS over time for both melatonin and placebo, but no between-group differences. There are a number of possible explanations for this. First, there are very large interindividual differences in sleep, which makes detection of between-group differences difficult. Second, early-morning waking was a selection criterion for the study. It is widely accepted that melatonin is a mild hypnotic, which may benefit people with initial insomnia, but may not be useful for early-morning waking. Third, different antidepressants may have different effects on sleep architecture. However, all but one patient was prescribed either a selective serotonin reuptake inhibitor or venlafaxine, which have the least effect on sleep architecture. Furthermore, there was no difference in class or dose between the groups. Fourth, SE, worse in the melatonin group, may have spontaneously remitted; however, this, if anything, would have the effect of showing an improvement in sleep with melatonin. Fifth, though no method of analysis is perfect, both completers analysis and LOCF generated similar results (Serfaty, 2006). Although preferred, LOCF may make unwarranted assumptions about missing data and this can result in underestimating or overestimating treatment effects (Streiner, 2002). Twenty-one actigraph data sets were available (objective measure) at the end of the study. It is worth noting that data were not available because of actigraph malfunction, which is independent of patient

Fig. 2



Total Beck Depression Inventory (BDI) score of melatonin versus placebo (mean and ranges for standard error shown).

factors; data were therefore missing completely at random, which should minimize bias.

Other than our trial, there are no RCTs that have used objective measures of sleep to compare melatonin with placebo in nonseasonal depression. Assuming the reliability of our measures, there are two main possible reasons why we may not have detected a significant difference. First, an effect of melatonin may exist, but our study was underpowered. Second, the effects of melatonin may be small.

### Power considerations

The first possibility that the study was underpowered warrants serious consideration. All published studies examining the beneficial effects of melatonin on mood and sleep in nonseasonal depression has methodological problems: small numbers, no placebo control, failure to randomize, no objective measures and publication bias may account for the widespread differing effects of melatonin on sleep and mood described earlier. The sample size in this study was calculated on the basis of the limited data published with regard to the therapeutic effects of melatonin, but in retrospect it is likely that the therapeutic effects of melatonin have been overestimated and that effects similar to those reported with melatonin agonists would be more realistic. Although not evaluated in psychiatric patients (Becker, 2006), a large study ( $n = 829$ ) by Roth *et al.* (2005, 2006), funded by Takeda Pharmaceuticals, found that ramelteon, a melatonin agonist, improves sleep by 9 min over placebo in older people with insomnia, and FDA approval has now been granted for its use. In our population, a nonsignificant increase in SE of 3.4% and sleep length of 4.1 min was observed in the melatonin group, which is of a similar order of magnitude to Roth *et al.*'s (2005, 2006) study. Post-hoc analysis on our data, using means for melatonin/placebo and pooled means for the whole sample population at week 4 of melatonin/placebo compared with baseline, suggests that melatonin may have an effect on sleep. At 80% power at the 5% significance level, using intention-to-treat data, a total of 90 people (45 in each group) would be required to detect this level of improvement in SE.

### Possible treatment effects of melatonin

The second possibility, that melatonin's effect on sleep is lesser than reported earlier, also needs to be addressed. Considerable individual variation in the response to exogenous melatonin exists, depending on the phase of circadian melatonin levels: the 'phase response curve'. Appropriately timed melatonin may show a corrective phase advance in melatonin secretion in SAD (Lewy *et al.*, 2003), and possibly mood disorder (Leppamaki *et al.*, 2003). Although all our patients had early-morning waking, which suggests a phase advance type of rhythm disorder, this cannot be certain. The rationale behind providing slow-release melatonin at bedtime was to mimic the

natural circadian rhythm by prolonging serum melatonin into the early hours of the morning, thus prolonging sleep. Doses of 3–10 mg of melatonin have consistently been used for people with nonseasonal depression (De Vries and Peeters, 1997; Fainstein *et al.*, 1997; Dolberg *et al.*, 1998; Dalton *et al.*, 2000); however, recent data suggest that this dose may be too large, with serum levels of melatonin being carried over into the next day. Indeed, for this reason, doses as low as 0.1 mg are now recommended for older people with sleep disturbance (Zhdanova *et al.*, 2001) and for treating SAD (Lewy *et al.*, 1998, 2003). The dose in nonseasonal depression remains to be established, and future trials investigating the potential beneficial effects of melatonin in depression should consider using different timing and dosing regimens.

Concomitant use of medication, which may affect sleep, needs to be considered, but there was no difference in prescribed psychotropic medication between the melatonin and placebo groups. Hypnotic medication was prescribed for sleep problems in one patient, but she had been on a stable dose for some months. It is therefore unlikely that hypnotic medication introduced a significant bias.

### Melatonin and mood

Of the two earlier RCTs, neither has shown a beneficial effect of melatonin on mood (Carman *et al.*, 1976; Dolberg *et al.*, 1998). GEE modelling suggests that there may be a weak effect of melatonin on mood when using the BDI, but not the HDRS. This finding is of interest, particularly given that a similar compound, the melatonin agonist, agomelatine, seems to have beneficial effects (Loo *et al.*, 2002; Kennedy and Emsley, 2006; Olie and Kasper, 2007) and to offer promising opportunities for treating depression (Lam, 2007).

### Prescribed antidepressants

We did not observe any significant differences in mood with melatonin, although there was some suggestion that this may be a type II error. Earlier RCTs of melatonin in depressed people had atypical patient groups (Carman *et al.*, 1976) and nonresponders to fluoxetine (Dolberg *et al.*, 1998), and therefore caution is required in concluding that melatonin may not be of any benefit. Over 70% (22 of 31) of people recruited to our trial were prescribed antidepressants, and this may explain our findings in several ways. First, concomitant antidepressant use may result in an improvement in mood in both the placebo group and the melatonin group, which will reduce between-group differences. However, the number of participants who were prescribed a therapeutic dose of antidepressant was small. Second, melatonin may have a therapeutic effect, but a disproportionate number of people in the placebo group might already be taking an antidepressant. This would reduce the apparent



therapeutic effect of melatonin. However, there were no between-group differences in the prescribed dose of the antidepressant. Third, patients who have failed to respond to antidepressants may represent a treatment-resistant group and therefore may not respond to melatonin. However, few people would satisfy conventional definitions of treatment resistance; only a quarter of the participants could have been prescribed a therapeutic dose of an antidepressant for at least 12 weeks (Quitkin *et al.*, 1993). Furthermore, compliance with antidepressants is known to be poor, as between a quarter and half of the patients do not take their antidepressants as prescribed (Demyttenaere *et al.*, 2001; Pinto-Meza *et al.*, 2008). Interestingly, judged by pill counts, compliance with our intervention was good, which is consistent with the expressed views of patients who chose to participate in a trial of 'natural treatment'.

Melatonin may act synergistically by augmenting the antidepressant effect, for example, by increasing brain serotonin (Cotzias *et al.*, 1971), and thus have a beneficial effect for those taking subtherapeutic doses of antidepressants. Neither we nor Dolberg *et al.* (1998) found a beneficial effect of melatonin combined with antidepressants; however, these findings may be explained by a type II error, and the possibility of melatonin for augmentation remains to be evaluated.

#### Dosing and length of treatment with melatonin

Most studies have investigated the use of melatonin for treating sleep and mood in depressed people over a 3–4 weeks period (Dolberg *et al.*, 1998; Lewy *et al.*, 1998; Dalton *et al.*, 2000). Antidepressants may require up to 12 weeks administration to achieve a therapeutic effect, and an improvement in mood has been associated with a longer treatment period of up to 6 months with melatonin (Bellipanni *et al.*, 2005). Although a longer treatment period may be required, our study findings (Table 2, Fig. 2) were consistent with those for the melatonin agonists (Lam, 2007) ramelteon (Roth *et al.*, 2005, 2006) and agomelatine (Pjrek *et al.*, 2007), suggesting that any beneficial effects occur early in the treatment.

#### Comparison with melatonin agonists

Approval for the use of agomelatine as a novel antidepressant has been granted by the European Commission and the FDA in the United States. Three RCTs have been carried out examining the effects of agomelatine on mood in humans (Loo *et al.*, 2002; Kennedy and Emsley, 2006; Olie and Kasper, 2007). Given the size of the treatment effect of agomelatine, a sample size of between 200 and 700 participants would be required to show significant advantage of agomelatine over placebo. Trials of antidepressants on FDA and European Medicines Agency databases often include 100 participants per group. We conducted a post-hoc analysis on BDI scores to

determine the numbers needed to detect a significant effect of melatonin on mood. At 80% power and at the 5% level of significance, at least 75 participants would be required in each group to detect a 2-point difference in means (estimated SD 2.34). This calculation was adjusted for an estimated inflation factor of 3.4. This factor was determined from our baseline sample ( $n = 22$ ), which generated an average cluster size of 4.6 and intraclass correlation coefficient of 0.65.

Though caution is necessary when extrapolating to humans, animal models suggest that agomelatine has 5-HT<sub>2c</sub> antagonist action (*cf.* melatonin). The beneficial effects mediating change are still undetermined (Hanoun *et al.*, 2004) and melatonin may behave differently from melatonin agonists.

#### Adaptations of methodology for further studies

As the negative findings in this study were probably related to small sample size, further trials should consist of at least 180 people to show a beneficial effect of melatonin over placebo on sleep and mood. In retrospect, lower doses, approximately 0.5 mg, of melatonin and variable dosing regimens should be considered. The use of a variety of objective and subjective measures of sleep and mood (including the BDI) with repeated recordings is essential. We were also presented with the difficulty of interpreting our findings because of the use of concomitant antidepressants in a subset of patients. Future trials should consider only recruiting patients, where pharmacological treatments have been clearly defined. First, a trial may consider recruiting only participants who are antidepressant-free (a comparison trial of melatonin against placebo). An alternative approach is to recruit only patients receiving antidepressants, providing they satisfy predefined criteria for treatment resistance. This approach would determine whether melatonin might be used to augment antidepressant treatment (augmentation trial).

#### Conclusion

This pragmatic study in primary care is the largest double-blind placebo-controlled trial to investigate the effects of melatonin as a hypnotic and mood enhancer in major depression. Although this study, which used rigorous methodology, did not show a significant improvement in sleep and mood with melatonin, findings suggest that this may be because of the small sample size and that melatonin's effects were similar to other recommended treatments (agomelatine, ramelteon and selective serotonin reuptake inhibitors). Given its safety and tolerability, melatonin may have potential for people who do not wish to take antidepressants, but this remains to be further evaluated.

#### Acknowledgements

The authors gratefully acknowledge the support of a grant from The Sir Jules Thorn Charitable Trust and

North Central Thames Research Network for the funding of this project, and Genzyme Pharmaceuticals Ltd. for providing the melatonin. The project was funded by The Sir Jules Thorn Charitable Trust and service costs were provided by the North Central Thames Research Network. Declaration of interest: All financial and material support for this research is described above. None of the authors has any affiliation or financial involvement with any organization or entity with a financial interest in or financial conflict with the subject matter or materials discussed in the manuscript.

## References

- American Psychiatric Association (1994). *Diagnostic and Statistical Manual of Mental Disorders, (DSM-IV)*. 4th ed. Washington, DC: APA.
- American Sleep Disorders Association (ASDA) (1990). *ICSD – International Classification of Sleep Disorders: diagnostic and coding manual*. Rochester, Minnesota: Diagnostic Classification Steering Committee, Thorpy MJ, Chairman.
- Arendt J (1995). *Melatonin and the pineal gland*. London: Chapman & Hall.
- Arendt J (2006). Does melatonin improve sleep? *BMJ* **332**:550.
- Arendt J, Skene DJ (2005). Melatonin as a chronobiotic. *Sleep Med Rev* **9**:25–39.
- Beck AT, Ward CH, Mendelson M, Mock J, Erbaugh J (1961). An inventory for measuring depression. *Arch Gen Psychiatry* **4**:561–571.
- Becker P (2006). Treatment of sleep dysfunction and psychiatric disorders. *Curr Treat Opin Neurol* **8**:367–375.
- Bellipanni GFDIM, Blasi F, Di Marzo A (2005). Effects of melatonin in perimenopausal and menopausal women: our personal experience. *Ann N Y Acad Sci* **1057**:393–402.
- Benca RM, Obermeyer WH, Thisted RA, Gillin JC (1992). Sleep and psychiatric disorders: a meta-analysis. *Arch Gen Psychiatry* **49**:651–668.
- Bollini P, Pampallona S, Tibaldi G, Kupelnick B, Munizza C (1999). Meta-analysis of dose-effect relationships in randomised clinical trials. *Br J Psychiatry* **174**:297–303.
- Brzezinski A, Vangel MG, Wurtman RJ, Norrie G, Zhdanova I, Ben-Shushan A, *et al.* (2005). Effects of exogenous melatonin on sleep: a meta-analysis. *Sleep Med Rev* **9**:41–50.
- Buscemi N, Vandermeer B, Hooton N, Pandya R, Tjosvold L, Hartling L, *et al.* (2006). Efficacy and safety of exogenous melatonin for secondary sleep disorders and sleep disorders accompanying sleep restriction: meta-analysis. *BMJ* **332**:385–388.
- Cagnacci A, Krauchi K, Wirz-Justice A, Volpe A (1997). Homeostatic versus circadian effects of melatonin on core body temperature in humans. *J Biol Rhythms* **12**:509–517.
- Carman JS, Post RM, Buswell R, Goodwin FK (1976). Negative effects of melatonin on depression. *Am J Psychiatry* **133**:1181–1186.
- Checkley S (1989). The relationship between biological rhythms and the affective disorders. In: Arendt J, Minors DS, Waterhouse JM, editors. *Biological rhythms in clinical practice*. London: Wright. pp. 160–183.
- Childs PA, Rodin I, Martin NJ, Plaskett L, Thompson C, Allen NHP, *et al.* (1995). Effect of fluoxetine on melatonin in patients with seasonal affective disorder and matched controls. *B J Psychiatry* **166**:196–198.
- Cole RJ, Kripke DF, Gruen W, Mullaney DJ, Gillin JC (1992). Automatic sleep/wake identification from wrist activity. *Sleep* **15**:461–469.
- Cotzias GC, Tang LC, Miller ST, Ginos JZ (1971). Melatonin and abnormal movements induced by L-dopa in mice. *Science* **173**:450–454.
- Crasson M, Kijiri S, Colin A, Kijiri K, L'Hermite-Baleriaux M, Anseau M, *et al.* (2004). Serum melatonin and urinary 6-sulfatoxymelatonin in major depression. *Psychoneuroendocrinology* **29**:1–12.
- Dalton EJ, Rotondi D, Levitan RD, Kennedy SH, Brown GM (2000). Use of slow-release melatonin in treatment resistant depression. *J Psychiatry Neurosci* **25**:48–52.
- De Vries MW, Peeters FPML (1997). Melatonin as a therapeutic agent in the treatment of sleep disturbance in depression. *J Nerv Ment Dis* **185**:201–202.
- Demyttenaere K, Enzlin P, Dewe W, Boulanger B, De Bie J, De Troyer W, *et al.* (2001). Compliance with antidepressants in a primary care setting, 1: beyond lack of efficacy and adverse events. *J Clin Psych* **62** (Suppl):30–33.
- Dolberg OT, Hirschmann S, Grunhaus L (1998). Melatonin for the treatment of sleep disturbances in major depression. *Am J Psychiatry* **155**:1119–1121.
- Endicott J, Spitzer RL (1978). A diagnostic interview-the schedule for affective disorders and schizophrenia. *Arch Gen Psychiatry* **35**:837–844.
- Fainstein I, Bonetto AJ, Brusco LI, Cardinali DP (1997). Effects of melatonin in elderly patients with sleep disturbance: a pilot study. *Curr Ther Res* **58**:990–1000.
- Frazer A, Brown R, Kocsis J, Amsterdam J, Winokur A, Sweeney J, *et al.* (1986). Patterns of melatonin rhythm in depression. *J Neural Transm* **21**:269–290.
- Gillin JC, Duncan W, Pettigrew KD, Frankel B, Snyder F (1979). Successful separation of depressed, normal, and insomniac subjects by EEG sleep data. *Am J Psychiatry* **36**:85–90.
- Hamilton M (1960). A rating scale for depression. *J Neurol Neurosurg* **23**:56–62.
- Hanoun N, Mocaer E, Boyer A, Hamon M, Lanfumey L (2004). Differential effects of the novel antidepressant agomelatine (S20098) versus fluoxetine on 5-HT<sub>2</sub> sub (1A) receptors in the rat brain. *Neuropharmacol* **47**:515–526.
- Herxheimer A, Petrie KJ (2005). Melatonin for the prevention and treatment of jet lag. The Cochrane Database of Systematic Reviews 2005, Issue 2. Art. No: CD001520.DOI:1002/14651858.CD001520.
- Kennedy SH, Emsley R (2006). Placebo-controlled trial of agomelatine in the treatment of major depressive disorder. *Eur Neuropsychopharmacol* **16**:93–100.
- Lam R (2007). High-quality remission: potential benefits of the melatonergic approach for patients with major depressive disorder. *Int Clin Psychopharmacol* **22** (Suppl 2):S21–S25.
- Leppamaki S, Partonen T, Vakkuri O, Lonnqvist J, Partinen M, Laudon M (2003). Effect of controlled-release melatonin on sleep quality, mood, and quality of life in subjects with seasonal or weather-associated changes in mood and behaviour. *Eur Neuropsychopharmacol* **13**:137–145.
- Lewy AJ, Sack RL, Miller LS, Hoban TM (1987). Antidepressant and circadian phase-shifting effects of light. *Science* **235**:352–354.
- Lewy AJ, Bauer VK, Cutler NL, Sack RL (1997). Melatonin treatment of winter depression: a pilot study. *Psychiatry Res* **77**:57–61.
- Lewy AJ, Bauer VK, Ahmed S, Thomas KH, Cutler NL, Singer CM, *et al.* (1998). The human phase response curve (PRC) to melatonin is about 12 h out of phase with the PRC to light. *Chronobiol Int* **15**:71–83.
- Lewy AJ, Lefler BJ, Hasler BP, Bauer VK, Bernert RA, Emens JS (2003). Plasma DLMO<sub>10</sub> Zeitgeber time 14: the therapeutic window for phase delayed winter depressives treated with melatonin. *Chronobiol Int* **20**:1215–1216.
- Lewy AJ, Lefler BJ, Emens JS, Bauer V (2006). The circadian basis of winter depression. *Proc Natl Acad Sci U S A* **103**:7414–7419.
- Loo H, Hale A, D'haenen H (2002). Determination of the dose of agomelatine, a melatonergic agonist and selective 5-HT<sub>2c</sub> antagonist, in the treatment of major depressive disorder: a placebo-controlled dose range study. *Int Clin Psychopharmacol* **17**:239–247.
- Loo H, Dalery J, Macher JP, Payen A (2003). Pilot study comparing in blind the therapeutic effect of two doses of agomelatine, melatonin-agonist and selective 5HT<sub>2c</sub> receptor antagonist, in the treatment of major depressive disorders. *Encéphale* **29**:165–171.
- McIntyre IM, Judd FK, Marriott PM, Burrows GD, Norman TR (1989). Plasma melatonin levels in affective states. *Int J Clin Pharmacol Res* **9**:159–164.
- Moher D, Schulz KF, Altman D (2001). The CONSORT statement: revised recommendations for improving the quality of reports of parallel-group randomized trials. *JAMA* **285**:1987–1991.
- Mynors-Wallis LM, Gath DH, Lloyd-Thomas AR, Tomlinson D (1995). Randomised controlled trial comparing problem solving treatment with amitriptyline and placebo for major depression in primary care. *BMJ* **310**:441–445.
- Olie JP, Emsley R (2005). Confirmed clinical efficacy of agomelatine (25–50 mg) in major depression: two randomized, double blind, placebo-controlled studies. *Eur Neuropsychopharmacol* **15**:S416–S417.
- Olie JP, Kasper S (2007). Efficacy of agomelatine, a MT<sub>1</sub>/MT<sub>2</sub> receptor agonist with 5-HT<sub>2c</sub> antagonistic properties, in major depressive disorder. *Int J Neuropsychopharm* **10**:661–673.
- Parrot AC, Hindmarsh I (1978). Factor analysis of sleep evaluation questionnaire. *Psychol Med* **8**:325–329.
- Parry BL, Fernando Martinez L, Maurer EL, Loopez A, Sorensen D, Meliska CJ (2006). Sleep, rhythms and women's mood. Part II. Menopause. *Sleep Med Rev* **10**:197–208.
- Perlis ML, Giles DE, Buysse DJ, Tu X, Kupfer DJ (1997). Self-reported sleep disturbance as a prodromal symptom in recurrent depression. *J Affect Disord* **42**:209–212.
- Pinto-Meza A, Fernandez A, Serrano-Blanco A, Haro JP (2008). Adequacy of antidepressant treatment in Spanish primary care: a naturalistic six-month follow-up study. *Psychiatr Serv* **59**:78–83.
- Pjrek E, Winkler D, Konstantinidis A, Willeit M, Praschak-Rieder N, Kasper S (2007). Agomelatine in the treatment of seasonal affective disorder. *Psychopharmacology* **190**:575–579.
- Quitkin FM, Stewart JW, McGrath PJ, Tricamo E, Rabkin JG, Ocepek-Welickson K, *et al.* (1993). Columbia atypical depression. A subgroup of depressives with better response to MAOI than to tricyclic antidepressants or placebo. *Br J Psychiatry* **21** (Suppl):30–34.

- Reppert SM, Weaver DR (1995). Melatonin madness. *Cell* **83**:1059–1062.
- Rosenthal NE, Sack DA, James SP, Parry BL, Mendelson WB, Tamarkin L, *et al.* (1985). Seasonal affective disorder and phototherapy. *Ann NY Acad Sci* **453**:260–269.
- Roth T, Seiden D, Sainati S, Wang-Weigand S, Zhang J, Zee P (2005). Phase III study to determine the efficacy of ramelteon in elderly patients with chronic insomnia [Abstract]. Proceedings of new clinical drug evaluation unit; June 6–9, 2005, Boca Raton, Florida.
- Roth T, Seiden D, Sainati S, Wang-Weigand S, Zhang J, Zee P (2006). Effects of ramelteon on patient-reported sleep latency in older adults with chronic insomnia. *Sleep Med* **7**:312–318.
- Sack RL, Brandes BS, Kendall BS, Lewy AJ (2000). Entrainment of free-running circadian rhythms by melatonin in blind people. *New Eng J Med* **343**:1070–1077.
- Sadeh A, Alster J, Urbach D, Lavie P (1989). Actigraphically based automatic bedtime sleep-wake scoring: validity and clinical applications. *J Ambul Monit* **2**:209–216.
- Sekula LK, Lucke JF, Heist EK, Czambel RK, Rubin RT (1997). Neuroendocrine aspects of primary endogenous depression XV: mathematical modeling of nocturnal melatonin secretion in major depressives and normal controls. *Psychiatry Res* **69**:143–153.
- Serfaty MA (2006). The use of melatonin for sleep disturbance in depression and dementia. MD Thesis, University of London.
- Serfaty MA, Kennell-Webb S, Warner J, Blizard R, Raven P (2002). Double blind randomised placebo controlled trial of low dose melatonin for sleep disorder in dementia [abstract]. *Int J Geriatric Psychiatry* **17**:1–8.
- Serfaty MA, Osborne D, Buszewicz MJ, Raven PW (2003). The effect of exogenous melatonin in major depression. *Chronobiol Int* **20**:1191–1192.
- Skene DJ, Deacon S, Arendt J (1996). Use of melatonin in circadian rhythm disorders and following phase shifts. *Acta Neurobiol Exp* **56**:359–362.
- Stanley N (1997). Actigraphy in psychopharmacology. In: Hindmarch I, Stonier PD, editors. *Human psychopharmacology, measures and methods*. Vol. 6. Chichester: John Wiley.
- Streiner DL (2002). The case of the missing data: methods of dealing with dropouts and other research vagaries. *W CAN J Psychiatry* **47**:70–77.
- Van Bommel AL (1997). The link between sleep and depression: the effects of antidepressants on EEG sleep. *J Psychosom Res* **42**:555–564.
- Wetterberg L (1978). Melatonin in humans: physiological and clinical studies. *J Neural Transm* **13 (Suppl)**:389–410.
- Wirz-Justice A (2006). Biological rhythm disturbances in mood disorders. *Int Clin Psychopharmacol* **21 (Suppl 1)**:S11–S15.
- Wirz-Justice A, Graw P, Krauchi K, Gisin B, Arendt J, Aldhous M, *et al.* (1990). Morning or night time melatonin is ineffective in seasonal affective disorder. *J Psychiatr Res* **24**:129–137.
- Zeger SL, Liang KY (1986). The analysis of discrete and continuous longitudinal data. *Biometrics* **42**:121–130.
- Zhdanova IV (2005a). Melatonin as a hypnotic: pro. *Sleep Med Rev* **9**:51–65.
- Zhdanova IV (2005b). Melatonin as a hypnotic: con. *Sleep Med Rev* **9**:81.
- Zhdanova IV, Wurtman RJ, Regan M, Taylor JA, Shi JP, Leclair OU (2001). Melatonin treatment for age-related insomnia. *J Clin Endocrinol Metab* **86**:4727–4730.